

Wheel Hub Assemblies


300.368

OEM: 03.272.43.10.0S, 03.272.43.10.2S, 09.801.06.07.0

APPLICATION: BPW H-K, SH-SKH, ECO PLUS SERIES 8-9 TONS AXLES


300.400

OEM: 09.801.06.07.0, 09.801.06.07.0S

APPLICATION: BPW H-K, SH-SKH, ECO PLUS SERIES 8-9 TONS AXLES


300.682

OEM: 09.801.07.35.0

APPLICATION: BPW H-KH, SH-SKH, ECO PLUS 2 SERIES 6.5-9 TONS AXLES


300.683

OEM: 09.801.08.36.0

APPLICATION: BPW SHB - SKHB ECO PLUS 3 SERIES 6.5 - 9 TONS AXLES


300.624

OEM: 09.801.08.39.0

APPLICATION: BPW SH - SKH ECO PLUS 3 SERIES 6.5 - 9 TONS AXLES


300.684

OEM: 09.801.07.32.0

APPLICATION: BPW SHB - SKHB ECO PLUS 2 SERIES 8-9 TONS AXLES

Dust Covers


300.604

OEM: 99.00.000.1.23

APPLICATION: BPW H, ECO PLUS 2 SERIES SN4218 / SN4220 TYPE AXLES


300.654

OEM: 99.00.000.1.26

APPLICATION: BPW H SERIES SN 4220 95 / ECO DRUM TYPE AXLES


300.655

OEM: 99.00.000.1.32

APPLICATION: BPW 95 / ECO DRUM SN 4220 H SERIES AXLES

Spring Brackets


300.913

OEM: 05.032.22.29.8

APPLICATION: BPW AL2/ ALM/ O SERIES AIR SUSPENSIONS, LH


300.914

OEM: 05.032.22.28.8

APPLICATION: BPW AL2/ ALM/ O SERIES AIR SUSPENSIONS, RH



300.553
Beam End Rebushing Kit

OEM#: 04.801.08.12.0, 09.801.08.20.0

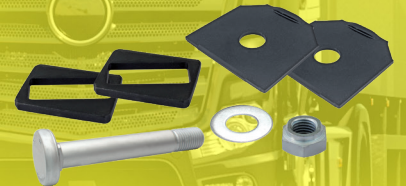
APPLICATION: BPW ECO AIR COMPACT
SERIES AIR SUSPENSIONS



300.676
Spring Bolt Repair Kit

OEM#: 05.857.00.28.0S

APPLICATION: BPW AL SERIES SUSPENSIONS



300.382
Spring Bolt Repair Kit

OEM#: 05.857.00.20.0

APPLICATION:
BPW AL SERIES AIR SUSPENSIONS



300.385
Spring Bolt Repair Kit

OEM#: 09.801.07.78.0

APPLICATION:
BPW AL SERIES AIR SUSPENSIONS



DOUBLE KIT

300.220
Camshaft Repair Kits

OEM#: 04.801.06.09.1, 09.801.02.22.0,
09.801.06.09.0, 09.801.06.09.1

APPLICATION:
BPW H-R, KH-KR, NH-NR SERIES AXLES