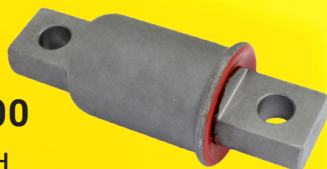


## MPU360.000

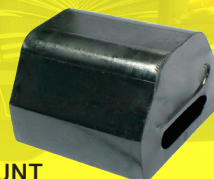
### SPRING EYE BUSH



OEM#	APPLICATIONS
16-16412-000 16-18035-000	FREIGHTLINER FAS II AIRLINER SERIES TRUCKS
3538115C1	INTERNATIONAL NAVISTAR REAR SINGLE/TANDEM AXLE SUSPENSION NEW CORPORATE AIR IROS SERIES TRUCKS
52039, 52296	PETERBILT AIRGLIDE SERIES TRUCKS

## 10.399

### SPRING MOUNT



OEM#: 60314-000  
Application: HENDRICKSON  
REAR HAULMAAX 400/460  
SERIES SUSPENSIONS

## 10.400

### SPRING MOUNT



OEM#: 67778-000  
Application: HENDRICKSON  
REAR HAULMAAX SERIES  
SUSPENSIONS

## MPU10.055

### TORQUE ROD BUSH



OEM#	APPLICATIONS
A16-119-448-000	FREIGHTLINER FH34-38 4" SPRING, FH36-40 3" SPRING, FAS AIRLINER II SERIES TRUCKS, POLYURETHANE
47691-000L	HENDRICKSON REAR HAULMAAX, PRIMAAX, FIREMAAX, HAS 360/ 400/402 SERIES SUSPENSIONS
47691-000	HINO REAR COMFORT AIR SUSPENSIONS, POLYURETHANE



## MPU540.027

### TORQUE ROD BUSH

OEM#: 836940, 839310  
Application: KENWORTH  
REAR SUSPENSIONS AG  
200/230/400/460 AIRGLIDE  
SERIES TRUCKS



## MPU10.060

### TORQUE ROD BUSH

OEM#: 44695-000, 44695-000L  
Application: HENDRICKSON  
REAR HAS 120/ 150/ 190/ 210/  
230/ 360/ 400/ 402/ 40LH/ 460,  
HA180/ 200/ 230/ 360/ 400/  
460 SERIES SUSPENSIONS



## MPU560.169

### INSULATOR PAD

OEM#: 10QK365A  
25121508, R307481  
Application: MACK 4"  
SPRING REAR  
SUSPENSION SS34 / 38,  
SS50 CAMELBACK, ST34  
TAPER LEAF SPRING,  
SW/SWW WALKING  
BEAM SERIES TRUCKS  
MERITOR SUSPENSIONS



## MPU560.170

### INSULATOR PAD

OEM#: 10QK36B, 10QK36C  
21036254, R302920  
Application: MACK 4"  
SPRING REAR SUSPENSION  
SS34/38, SWS573,  
SS44/SWS57, SS50  
CAMELBACK, ST34 TAPER  
LEAF SPRING, SW/SWW  
WALKING BEAM SERIES  
TRUCKS  
MERITOR SUSPENSIONS



## MPU560.172

### INSULATOR PAD

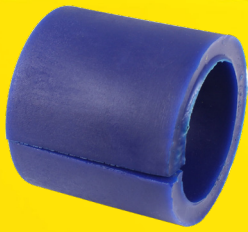
OEM#: 25115012, 10QK370  
R302919, R308667  
Application: MACK 4"  
SPRING REAR SUSPENSION  
SS34/38, SWS573, S44/  
SWS57, SS50 CAMELBACK,  
SW/SWW WALKING BEAM  
SERIES TRUCKS  
MERITOR SUSPENSIONS



## MPU560.174

### INSULATOR PAD

OEM#: 10QK372, 10QK389  
R307481  
Application: MACK 5"  
SPRING REAR SUSPENSION  
SS58, SS65/SW59  
CAMELBACK, SW/SWW  
WALKING BEAM SERIES  
TRUCKS  
MERITOR SUSPENSIONS



## MPU540.060

### SWAY BAR BUSH

OEM#: K066-460

Application: KENWORTH  
AIRGLIDE AG 200 SERIES AIR  
SUSPENSIONS

## MPU680.075

### SPACER BUSH

OEM#	APPLICATIONS
03-01675	PETERBILT REAR AIR SUSPENSION SINGLE/ TANDEM AXLE LOW MOUNT AIR LEAF SERIES TRUCKS
R304776	MERITOR SUSPENSIONS



## MPU984.004

### ISOLATOR BUSH

Application: EATON FULLER,  
FREIGHTLINER, INTERNATIONAL  
NAVISTAR, MACK, PETERBILT, VOLVO



OEM#	APPLICATIONS
21244	EATON FULLER
3088-K399	MACK
FULK3399	INTERNATIONAL NAVISTAR / VOLVO / FREIGHTLINER
K3399	PETERBILT

## 984.003

### ISOLATOR BUSHING KIT



## 540.141

### MOUNT BUSH

OEM#: M13-6001, EM-7569001  
Application: KENWORTH T600,  
T680, T800, W900 SERIES TRUCKS  
PETERBILT 348, 379, 388, 389  
SERIES TRUCKS



## 540.140

### EXHAUST MOUNTING KIT

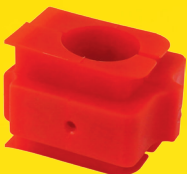
OEM#: M13-6001,  
M13-6001S  
EM75-69000  
Application: KENWORTH  
T600, T680, T800, W900  
SERIES TRUCKS  
PETERBILT 348, 379, 388,  
389 SERIES TRUCKS



## 680.136

### EXHAUST BUSHING KIT

OEM#: M136001S1  
EM75-69000S1  
Application: KENWORTH  
T600, T680, T800, W900  
SERIES TRUCKS  
PETERBILT 348, 379, 388,  
389 SERIES TRUCKS



## MPU360.296

### CABIN MOUNT BUSH

OEM#: 18-37924-000  
Application: FREIGHTLINER  
FLD SERIES TRUCKS



## MPU360.557

### HOOD BUMPER

OEM#: A17-20868-000,  
A18-59704-000  
Application: FREIGHTLINER  
CASCADIA SERIES TRUCKS



## MPU10.177

### BEAM END BUSH

OEM#: 29878-001,  
29878-001L

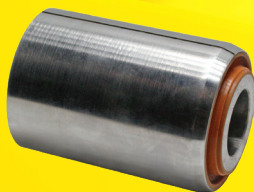
Application: HENDRICKSON AR2  
460, RT/RTE 460/480, RT2/RTE2  
480, RS 450 & 480 SERIES  
TANDEM SUSPENSIONS

## MPU760.017

### SPRING EYE BUSH

OEM#: 2120057893

Application: RANDON NEUMATIC  
SUSPENSIONS



## MPU6300

### TORQUE ROD BUSH

OEM#	APPLICATIONS
U-JA-0033-001, UXA000011000	FRUEHAUF F, J, NF-2, NT-2, NT2W-W TRAILER SUSPENSIONS
R307433	MERITOR SMT SERIES SUSPENSIONS



## 422.052

### TORQUE ROD BUSH

OEM#: XE005501

Application: FRUEHAUF HENRED  
SUSPENSIONS



## MPU895.001

### TORQUE ROD BUSH

OEM#: FW880514W

Application: FUWA FW88  
SERIES SUSPENSIONS



## MPU10.035

### PIVOT BUSH

OEM#: C-3558, S-21824

Application: HENDRICKSON INTRAAX  
AA230/250T, VANTRAAX AAT230/  
250, HKA180/ 200/ 250 , HK/HS 190/  
230, HT 190/ 230/ 250/ 300, HLM2  
SERIES SUSPENSIONS



## 422.061

### EQUALIZER BUSH

OEM#: XE004801

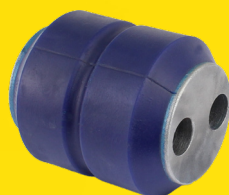
Application: FRUEHAUF  
HENRED F, FA & F2 SERIES  
SUSPENSIONS, UK &  
SOUTH AFRICAN SPECS



## MPU5384

### EQUALIZER BUSH

OEM#	APPLICATIONS
U-JA-0030-001 UXA000004000 UXA0004	FRUEHAUF T1 SERIES W24T1&2, W27T1&2 TRAILER J SERIES SUSPENSIONS
R307432	MERITOR SUSPENSIONS



## MPU460.004

### EQUALIZER BUSH

OEM#: 701000

Application: HUTCH H &  
CH 7600, 7700, 9600, 9700  
SERIES SUSPENSIONS



## MPU720.013

### EQUALIZER BUSH

OEM#	APPLICATIONS
1806701, T5524	REYCO / TRANSPRO 21B SERIES SUSPENSIONS
R308653	MERITOR SM, SMT, T SERIES SUSPENSIONS
Y503624	YORK / TEC / HENDRICKSON HFT OVERSLUNG / UNDERSLUNG, TBS, TST SERIES SUSPENSIONS



## MPU720.014

### EQUALIZER REBUSHING KIT

OEM#	APPLICATIONS
R309555	MERITOR SUSPENSIONS
TK-18998	REYCO 21B SERIES SUSPENSIONS





## MPU560.178

### INSULATOR PAD

OEM#: 10QK130P1, R307441

Application: MACK 4"  
SPRING REAR  
SUSPENSION SS34/38  
CAMELBACK SERIES  
TRUCKS  
MERITOR SUSPENSIONS

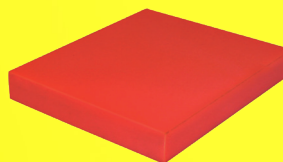


## 170.010

### TRUNNION BUSH

OEM#: 91008022, SP-0192

Application: NEWAY  
SB360B/500B/600B/660HDA, TS, UR,  
USR, SERIES TRAILER SUSPENSIONS  
WATSON & CHALIN SP, PEDESTAL  
MOUNT TRAILER SINGLE POINT  
SERIES SUSPENSIONS



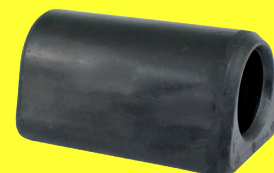
## 170.009

### SPRING END PAD

OEM#: 91028089, SP-0193

Application: NEWAY T/  
TR8540/8600/8750/8900 TRI-AXLE,  
TS/US/USR SINGLE POINT TRAILER  
SUSPENSIONS

WATSON & CHALIN SP, US, SMUS,  
TSR, TS, SM, SMR, PAR SERIES SINGLE  
POINT SUSPENSIONS



## 600.161

### FOOT PIN BUSH

OEM#: XB-0012-3

Application: SAF  
HOLLAND FW0E70  
SERIES FIFTH WHEELS



## 402.012

### SHACKLE BUSH

OEM#: 90385-23037

Application: TOYOTA  
DYNA 20, FEBEST  
TSB-787 SERIES  
SUSPENSIONS



## 710.006

### SHACKLE BUSH

OEM#: 90043-85047-000

Application: DAIHATSU  
DELTA V24 FRONT  
SPRING SUSPENSIONS



## 710.007

### SHACKLE BUSH

OEM#: 90043-85049-000

Application: DAIHATSU  
DELTA REAR V24 SERIES  
SPRING SUSPENSIONS



## MPU260.024

### SHACKLE BUSH

OEM#: 55046-01G00

Application: NISSAN-UD  
REAR SUSPENSION NP300  
PICKUP SERIES TRUCKS



## MPU371.017

### SHACKLE BUSH

OEM#: 90385-18025

Application: TOYOTA  
LANDCRUISER 40, FJ45,  
FJ55, HJ45, FJ55 SERIES  
FRONT SUSPENSIONS



## MPU371.032

### STABILIZER BUSH

OEM#: 90948-T1002

Application: TOYOTA  
INNOVA, F/L, LEXUS  
SERIES SUSPENSIONS

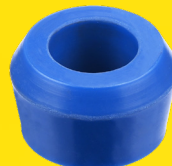


## MPU371.031

### SHOCK ABSORBER BUSH

OEM#: 90385-19003

Application: TOYOTA LAND  
CRUISER, LEXUS LX SERIES  
FRONT SUSPENSIONS



## MPU686.001

### SHOCK ABSORBER BUSH

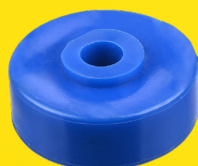
Application: GABRIEL SHOCK  
ABSORBERS



## MPU686.004

### SHOCK ABSORBER BUSH

Application: GABRIEL SHOCK  
ABSORBERS



## MPU686.002

### SHOCK ABSORBER BUSH

Application: GABRIEL SHOCK  
ABSORBERS



## MPU520.066

### SPRING BUFFER

OEM#: 8-97254387-0, 8-98335039-0

Application: ISUZU NKR, NPR SERIES TRUCKS