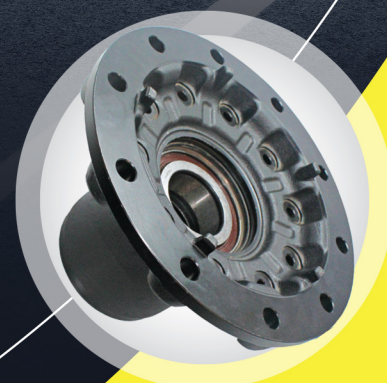




NPA 958

# EUROPEAN TRUCK & TRAILER WHEEL HUBS

---





## SUSPENSION



## FIFTH WHEEL



## BODY



**AXLE**



## ANTI-VIBRATION



## DRIVELINE



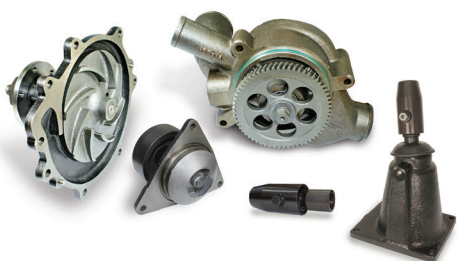
## CABIN



## STEERING



## ENGINE & TRANSMISSION



## EXHAUST





SR.#	BRANDS	PAGE
	TRUCK APPLICATIONS	
1	DAF	02-04
2	IVECO	05-05
3	MERCEDES	06-07
4	RENAULT	08-08
5	SCANIA	09-10
6	VOLVO	11-11
	TRAILER APPLICATIONS	
7	BPW	12-20
8	FRUEHAUF	21-21
9	GIGANT	22-22
10	MERITOR	23-26
11	RANDON	27-27
12	SAF HOLLAND	28-31
13	SCHMITZ, SMB, TRAILOR	32-32

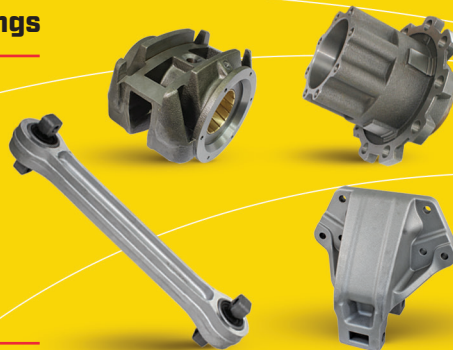
- **13 Brands**
- **61 References**
- **Fully greased and ready for installation, OEM quality bearings**
- **Fitted with our 'Nova Seals' & high quality impulse wheels**
- **OEM Quality cup & cones**





**Aluminium, Spheroidal & Steel castings**

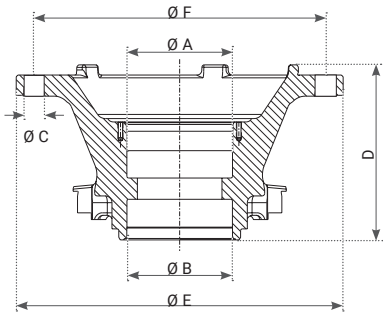
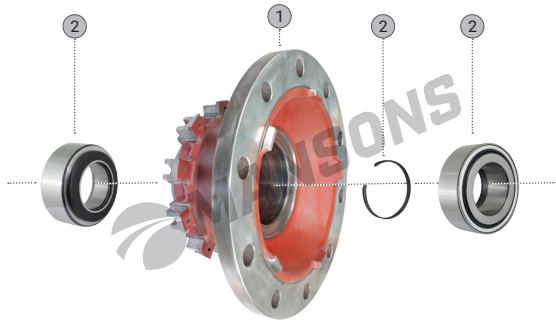
- Cast in our own foundries
- OEM grade materials suitable for Heavy Duty applications
- Trusted source for several global OEM & Tier 1 companies
- 2 years product warranty



**200.273**

**WHEEL HUB ASSEMBLY**

**OEM #**  
2019789  
**APPLICATION**  
DAF LF55, CF65,  
CF75, CF85, XF95,  
XF105 SERIES  
TRUCKS



Bare hub dimensions

Ø A	Ø B	Ø C	D	Ø E	Ø F
124.90	124.90	24.90	207.00	386.50	335.00

MANSONS #	DESCRIPTION	OEM #	TYPE	QTY.
200.274	WHEEL HUB, BARE	—	1	1
200.097	WHEEL BEARING	1801592	2	1



## 200.128

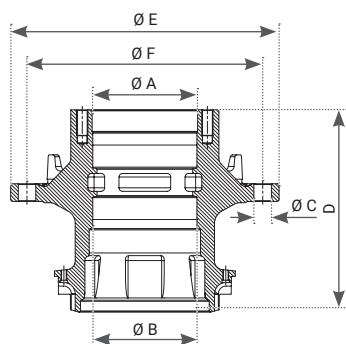
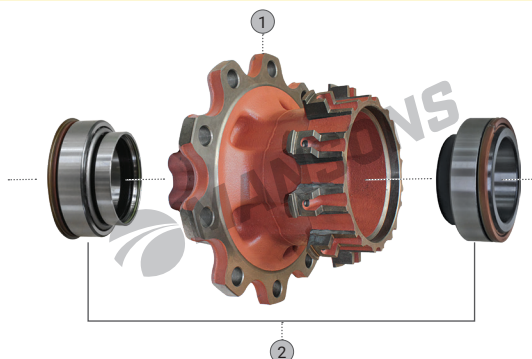
### WHEEL HUB ASSEMBLY

#### OEM #

1389061  
1391617  
1818003  
1818003R

#### APPLICATION

DAF LF55, CF65,  
CF75, CF85, XF95,  
XF 105 SERIES  
TRUCKS



Bare hub dimensions

Ø A	Ø B	Ø C	D	Ø E	Ø F
148.00	148.00	25.00	287.00	382.00	335.00

MANSONS #	DESCRIPTION	OEM #	TYPE	QTY.
200.140	WHEEL HUB, BARE	1389061 1391617S 1818003S	1	1
200.027	WHEEL BEARING	1801594	2	1

## 200.129

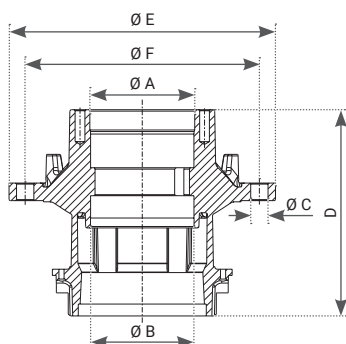
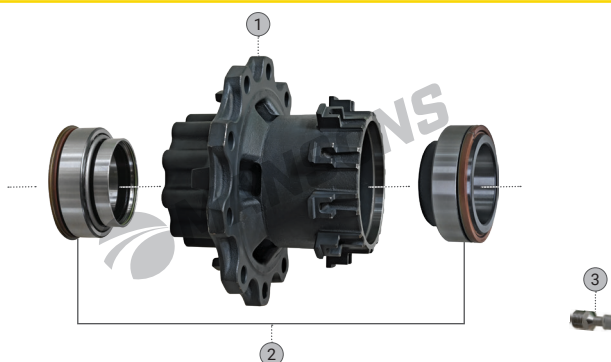
### WHEEL HUB ASSEMBLY

#### OEM #

1657637, 1812161  
1812161R, 2019802,  
2019802A, 2019802R,  
2104395

#### APPLICATION

DAF LF55, CF65,  
CF75, CF85, XF95,  
XF 105 SERIES  
TRUCKS



Bare hub dimensions

Ø A	Ø B	Ø C	D	Ø E	Ø F
148.00	148.00	25.00	295.00	382.00	335.00

MANSONS #	DESCRIPTION	OEM #	TYPE	QTY.
200.142	WHEEL HUB, BARE	1657637S 1812161S 2019802S 2104395S	1	1
200.027	WHEEL BEARING	1801594	2	1
200.396	PLUG	—	3	1

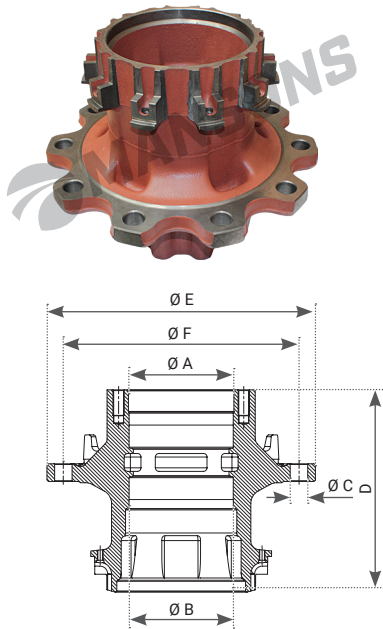


## 200.140

### WHEEL HUB, BARE

**OEM #**  
1389061  
1391617S  
1818003S

**APPLICATION**  
DAF CF65, CF75,  
CF85, LF55, XF  
95, XF 105 SERIES  
TRUCKS



Bare hub dimensions

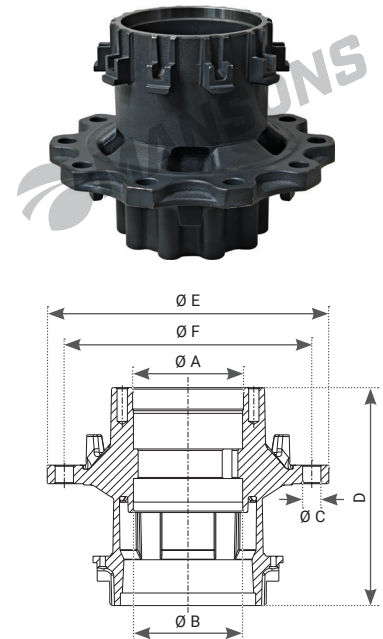
Ø A	Ø B	Ø C	D	Ø E	Ø F
148.00	148.00	25.00	287.00	382.00	335.00

## 200.142

### WHEEL HUB, BARE

**OEM #**  
1657637S  
1812161S  
2019802S  
2104395S

**APPLICATION**  
DAF LF55, CF65,  
CF75, CF85, XF95,  
XF 105 SERIES  
TRUCKS



Bare hub dimensions

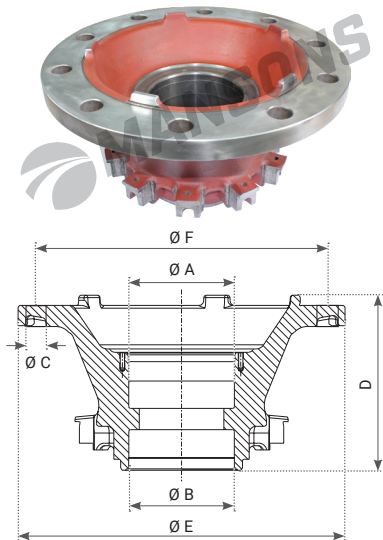
Ø A	Ø B	Ø C	D	Ø E	Ø F
148.00	148.00	25.00	295.00	382.00	335.00

## 200.274

### WHEEL HUB, BARE

**OEM #**

**APPLICATION**  
DAF LF55, CF65,  
CF75, CF85, XF95,  
XF105 SERIES TRU



Bare hub dimensions

Ø A	Ø B	Ø C	D	Ø E	Ø F
124.90	124.90	24.90	207.00	386.50	335.00



**750.176**

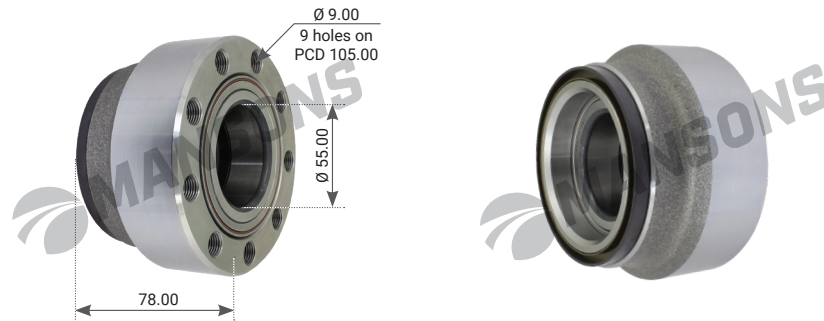
WHEEL HUB

**OEM #**

5801341551

**APPLICATION**

IVECO DAILY SERIES  
VANS



## 790.162

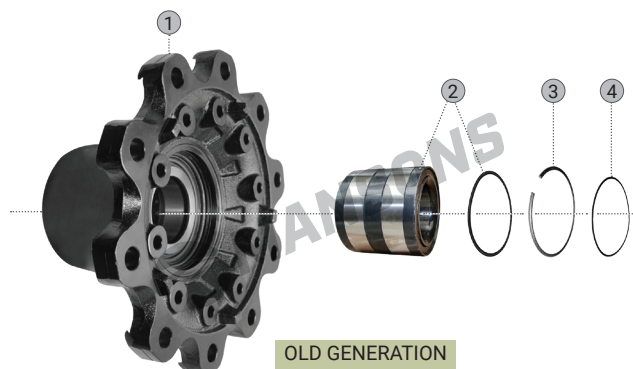
### WHEEL HUB ASSEMBLY

**OEM #**

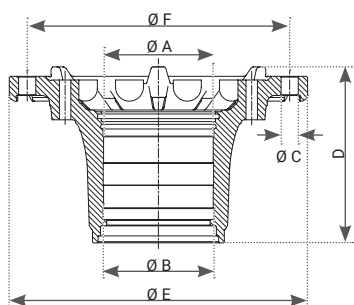
946 356 04 01  
A0003500535  
N000 350 05 35  
N000 390 05 25

**APPLICATION**

MERCEDES  
AIRMASER,  
STEERMASTER  
SERIES TRUCKS  
MERCEDES DISCOS  
TE 4 / TE 5 SERIES  
TRAILER AXLES



OLD GENERATION



Bare hub dimensions

Ø A	Ø B	Ø C	D	Ø E	Ø F
140.00	140.00	22.00	224.50	383.00	335.00

MANSONS #	DESCRIPTION	OEM #	TYPE	QTY.
790.161	WHEEL HUB, BARE	000 350 05 35S1 946 356 04 01S1 N000 350 23 35S1 N000 390 05 25S1 N000 350 05 35S1	1	1
790.159	WHEEL BEARING	014 981 9305 0149815105 0149819905 0169812805 0179815005 A014 981 5105 A014 981 9305 A014 981 9905 A016 981 2805 A017 981 5005	2	1
100.0100S	LOCK RING	A946 994 0035	3	1
100.009	O RING	027 997 88 48 A027 997 88 48	4	1

## 700.249

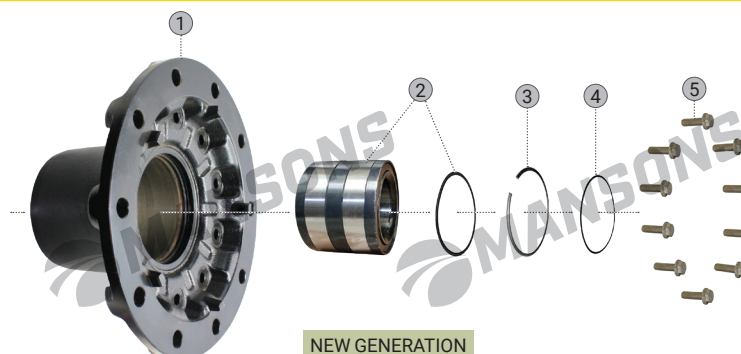
### WHEEL HUB ASSEMBLY

**OEM #**

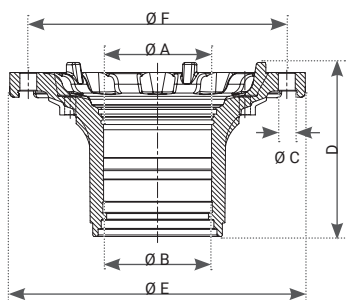
A000 350 2335

**APPLICATION**

MERCEDES DISCOS  
TE 5 SERIES  
TRAILER AXLES



NEW GENERATION



Bare hub dimensions

Ø A	Ø B	Ø C	D	Ø E	Ø F
140.00	140.00	22.00	225.00	382.00	335.00

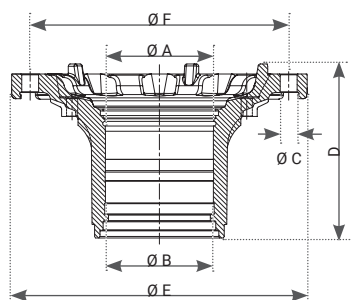
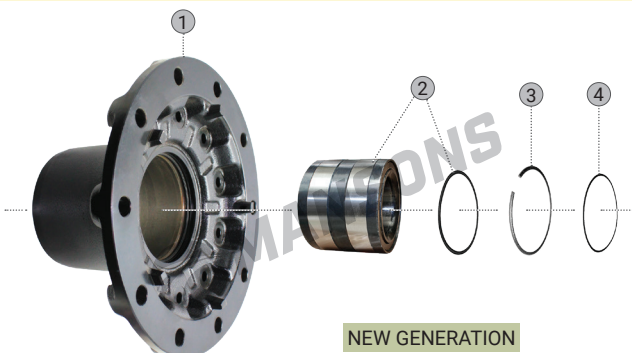
MANSONS #	DESCRIPTION	OEM #	TYPE	QTY.
700.250	WHEEL HUB	A9463562601	1	1
790.159	WHEEL BEARING	A014 981 5105 A014 981 9305 A014 981 9905 A017 981 5005	2	1
100.010	LOCK RING	A946 994 00 35	3	1
100.009	O RING	A027 997 88 48	4	1
700.251	BRAKE DISC BOLT	N910 105 014 010	5	10

## 700.266

**OEM #**  
A000 350 23 35S

**APPLICATION**  
MERCEDES DISCOS  
TE 5 SERIES  
TRAILER AXLES

## WHEEL HUB ASSEMBLY



Bare hub dimensions

Ø A	Ø B	Ø C	D	Ø E	Ø F
140.00	140.00	22.00	225.00	382.00	335.00

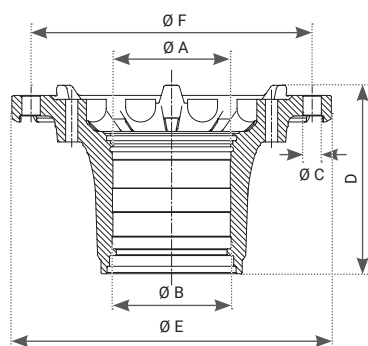
MANSONS #	DESCRIPTION	OEM #	TYPE	QTY.
700.250	WHEEL HUB	A9463562601	1	1
790.159	WHEEL BEARING	A014 981 5105 A014 981 9305 A014 981 9905 A017 981 5005	2	1
100.010	LOCK RING	A946 994 00 35	3	1
100.009	O RING	A027 997 88 48	4	1

## 790.161

## WHEEL HUB, BARE

**OEM #**  
946 356 04 01S1  
000 350 05 35S1  
N000 350 23 35S1  
N000 390 05 25S1

**APPLICATION**  
MERCEDES  
AIRMASER,  
STEERMASTER  
SERIES TRUCKS  
MERCEDES DISCOS  
TE 4/ TE 5 SERIES  
TRAILER AXLES



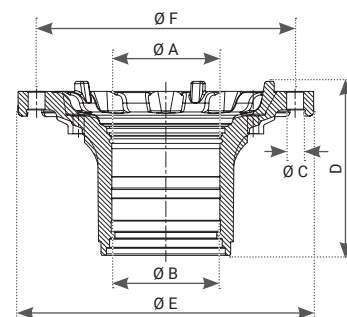
Bare hub dimensions

Ø A	Ø B	Ø C	D	Ø E	Ø F
140.00	140.00	22.00	224.50	383.00	335.00

## 700.250

## WHEEL HUB, BARE

**OEM #**  
A946 356 2601  
**APPLICATION**  
MERCEDES DISCOS  
TE 5 SERIES  
TRAILER AXLES



Bare hub dimensions

Ø A	Ø B	Ø C	D	Ø E	Ø F
140.00	140.00	22.00	225.00	382.00	335.00

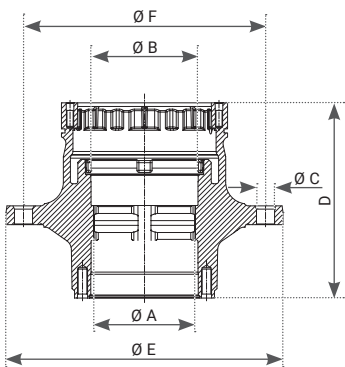
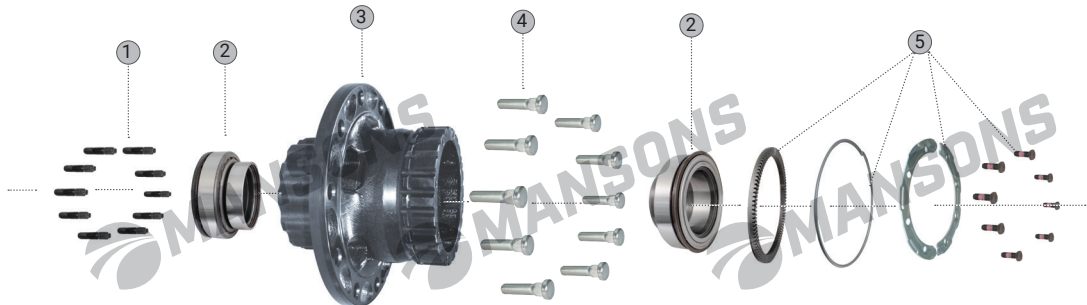


900.464

WHEEL HUB ASSEMBLY

**OEM #**  
7420516957  
7420535263  
7485107753

**APPLICATION**  
RENAULT PREMIUM  
TR/PR/DXI,  
MAGNUM DXI 12/  
DXI13 SERIES  
TRUCKS



Bare hub dimensions

ØA	ØB	ØC	D	ØE	ØF
147.90	147.90	25.20	270.00	383.50	335.00

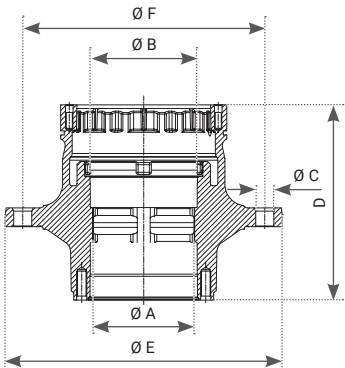
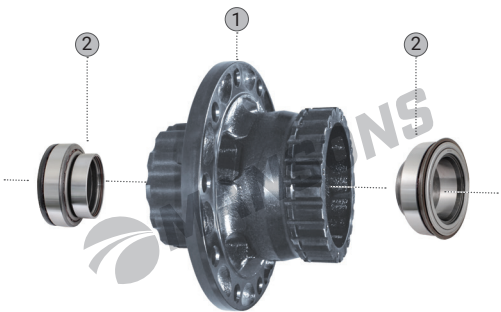
MANSONS #	DESCRIPTION	OEM #	TYPE	QTY.
900.118	WHEEL STUD	7403171328	1	12
900.333	WHEEL BEARING, CARTRIDGE	5001861915 7420518661 7420792440	2	1
900.464.1	WHEEL HUB, BARE	7420516957S 7420535263S 7485107753S	3	1
900.117	WHEEL BOLT	7420515517	4	10
900.484	BRAKE DISC REPAIR KIT	7420535263S1 7485107753S1	5	1 Kit

900.485

WHEEL HUB ASSEMBLY

**OEM #**  
7420375549S2  
7420535263S2  
7485107753S2

**APPLICATION**  
RENAULT PREMIUM  
TR/ PR/ DXI,  
MAGNUM DXI 12/  
DXI13 SERIES  
TRUCKS



Bare hub dimensions

ØA	ØB	ØC	D	ØE	ØF
147.90	147.90	25.20	270.00	383.50	335.00

MANSONS #	DESCRIPTION	OEM #	TYPE	QTY.
900.464.1	WHEEL HUB, BARE	7420516957S 7420535263S 7485107753S	1	1
900.333	WHEEL BEARING, CARTRIDGE	5001861915 7420518661 7420792440	2	1

## 100.566

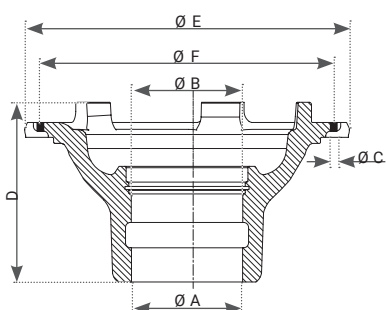
### OEM #

1414154S  
1724407S  
1868674S

### APPLICATION

SCANIA P, G, R, T, 4  
SERIES TRUCKS &  
4, F, K, N SERIES BUS

## WHEEL HUB ASSEMBLY



### Bare hub dimensions

Ø A	Ø B	Ø C	D	Ø E	Ø F
126.90	127.20	22.30	205.00	375.00	335.00

MANSONS #	DESCRIPTION	OEM #	TYPE	QTY.
100.566.1	WHEEL HUB, BARE	1724407 1414154 1868674	1	1
100.520	WHEEL BEARING	1336296, 1356897 1382900, 1413785 1439070, 1443078 1476945, 1724482 1868087, 2310169	2	1
100.578	CIRCLIP	1358497	3	1

## 100.567

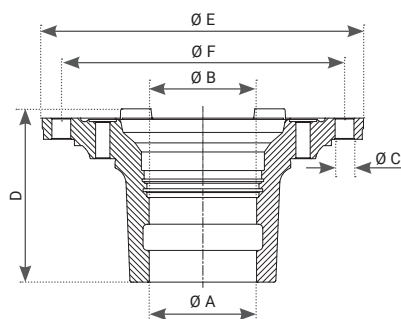
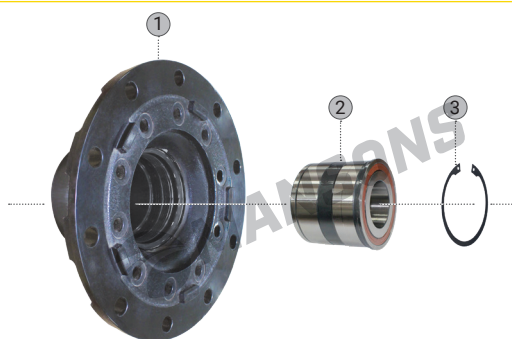
### OEM #

1480933S  
1724406S  
1868663S

### APPLICATION

SCANIA P, G, R, T, 4  
SERIES TRUCKS &  
4, F, K, N SERIES BUS

## WHEEL HUB ASSEMBLY



### Bare hub dimensions

Ø A	Ø B	Ø C	D	Ø E	Ø F
126.90	127.20	22.30	205.00	380.00	335.00

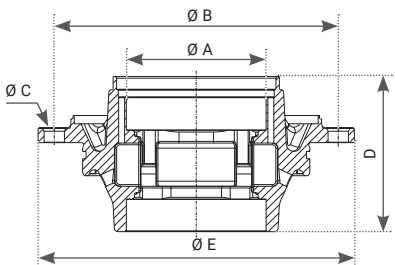
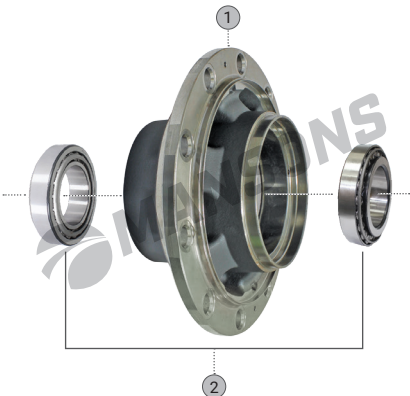
MANSONS #	DESCRIPTION	OEM #	TYPE	QTY.
100.567.1	WHEEL HUB, BARE	1480933 1724406 1868663	1	1
100.520	WHEEL BEARING	1336296, 1356897 1382900, 1413785 1439070, 1443078 1476945, 1724482 1868087, 2310169	2	1
100.578	CIRCLIP	1358497	3	1

# 100.775

**OEM #**  
1942755S  
2290553S

**APPLICATION**  
SCANIA P, G, R, T  
SERIES TRUCKS, 4,  
F, K, N BUS

## WHEEL HUB ASSEMBLY



Bare hub dimensions

Ø A	Ø B	Ø C	D	Ø E
165.00	335.00	24.00	183.00	375.00

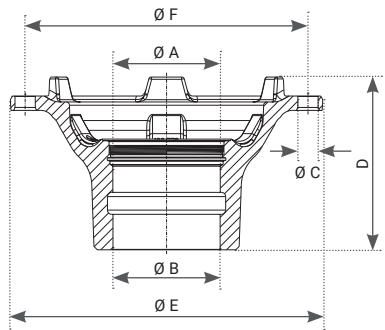
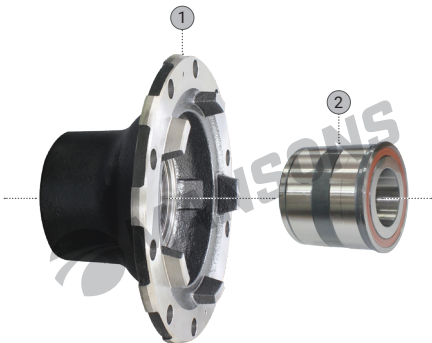
MANSONS #	DESCRIPTION	OEM #	TYPE	QTY.
100.775.1	WHEEL HUB	1942755, 2290553	1	1
100.792	WHEEL BEARING	1911810, 383343	2	2

# 100.776

**OEM #**  
1864428S  
2085471S  
2290532S

**APPLICATION**  
SCANIA P, G, R, T  
SERIES TRUCKS, 4,  
F, K, N SERIES BUS

## WHEEL HUB ASSEMBLY



Bare Hub dimensions

Ø A	Ø B	Ø C	D	Ø E
127.20	335.00	24.00	205.00	375.00

MANSONS #	DESCRIPTION	OEM #	TYPE	QTY.
100.776.1	WHEEL HUB	1864428, 2085471 2290532	1	1
100.520	WHEEL BEARING	1336296, 1356897 1382900, 1413785 1439070, 1443078 1476945, 1724482 1868087, 2310169	2	1



## 900.464

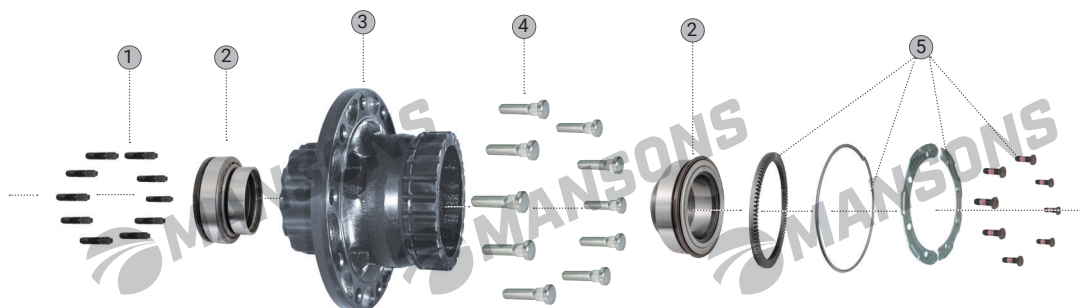
### WHEEL HUB ASSEMBLY

#### OEM #

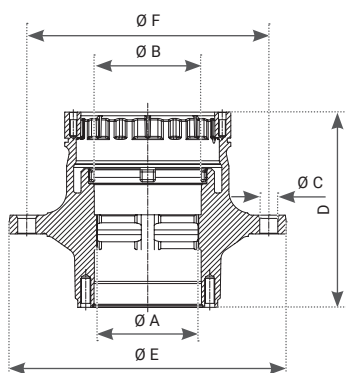
20535263  
85107753

#### APPLICATION

VOLVO FMX, FH12,  
FH16, FM9, FM12,  
FL6, FE, NH12  
SERIES TRUCKS &  
B6, B7, B9, B12, B13  
SERIES BUS



#### Bare hub dimensions



ØA	ØB	ØC	D	ØE	ØF
147.90	147.90	25.20	270.00	383.50	335.00

MANSONS #	DESCRIPTION	OEM #	TYPE	QTY.
900.118	WHEEL STUD	3171328	1	12
900.333	WHEEL BEARING, CARTRIDGE	20518661 20792440 20967828 21036050	2	1
900.464.1	WHEEL HUB	20535263S 85107753S	3	1
900.117	WHEEL BOLT	20515517	4	10
900.484	BRAKE DISC REPAIR KIT	22485980 3092224	5	1 Kit

## 900.485

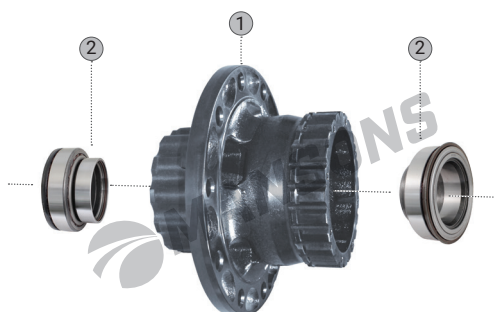
### WHEEL HUB ASSEMBLY

#### OEM #

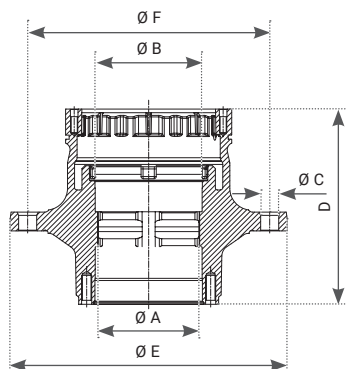
20535263S2  
85107753S2

#### APPLICATION

VOLVO FMX, FH12,  
FH16, FM9, FM12,  
FL6, FE, NH12  
SERIES TRUCKS &  
B6, B7, B9, B12, B13  
SERIES BUS



#### Bare hub dimensions



ØA	ØB	ØC	D	ØE	ØF
147.90	147.90	25.20	270.00	383.50	335.00

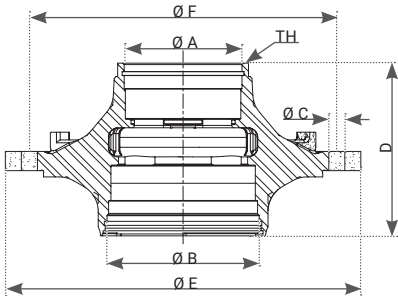
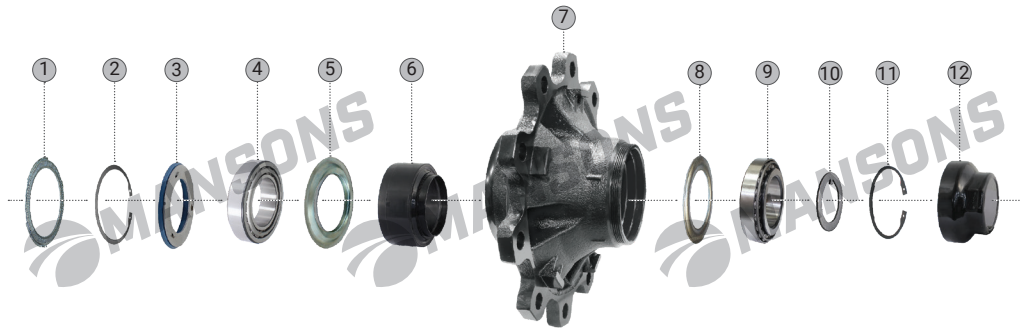
MANSONS #	DESCRIPTION	OEM #	TYPE	QTY.
900.464.1	WHEEL HUB	20535263S 85107753S	1	1
900.333	WHEEL BEARING, CARTRIDGE	20518661 20792440 20967828 21036050	2	1

300.400

WHEEL HUB ASSEMBLY

**OEM #**  
09.801.06.07.0  
09.801.06.07.0S

**APPLICATION**  
BPW H-K, SH-SKH,  
ECO PLUS SERIES  
8-9 TONS AXLES



Bare hub dimensions

Ø A	Ø B	Ø C	D	Ø E	Ø F	THREAD (TH)
120.00	150.00	22.00	180.00	380.00	335.00	M136 x 2.5P

MANSONS #	DESCRIPTION	OEM #	TYPE	QTY.
300.628	IMPULSE WHEEL	03.310.08.51.0	1	1
300.020	CIRCLIP	02.5606.60.90	2	1
GR314	SEAL	02.566.47.40.0	3	1
300.014	WHEEL BEARING	02.640.89.00.0 02.641.02.30.0 02.600.89.00.0 02.640.89.20.0 02.6410.23.00	4	1
300.012	COVER PLATE	03.010.93.34.0	5	1
GR315	DUST BOOT	03.120.45.15.0	6	1
300.368.1	WHEEL HUB, BARE	01.272.43.19.0 03.272.43.10.2	7	1

MANSONS #	DESCRIPTION	OEM #	TYPE	QTY.
300.006	THRUST WASHER	03.370.26.24.0 03.370.26.22.0	8	1
300.004	WHEEL BEARING	02.640.76.50.0 02.6407.65.00 02.6407.67.00 02.641.02.20.0 02.6410.22.00	9	1
LW115	AXLE END LOCK WASHER	03.320.64.01.0	10	1
300.359	CIRCLIP	02.5606.22.90	11	1
300.369	HUB CAP	03.212.25.31.0 03.212.25.33.0	12	1

## 300.368

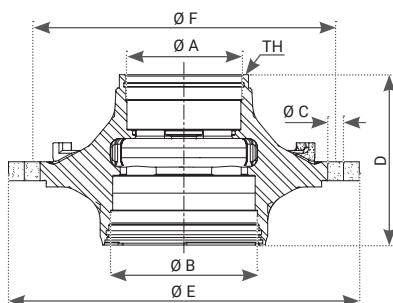
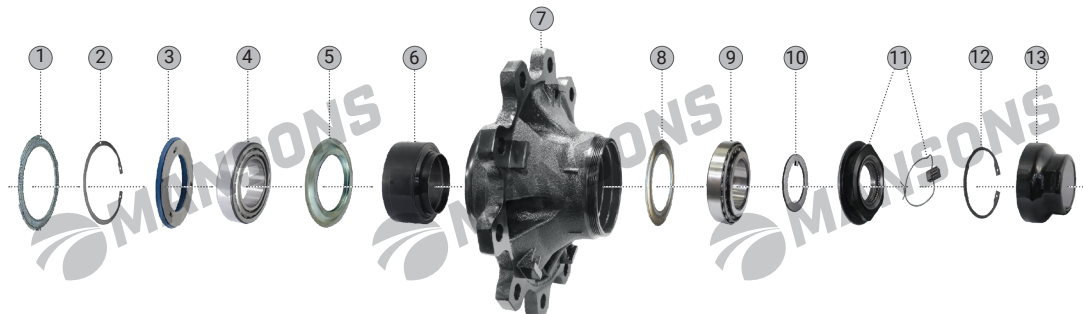
### OEM #

03.272.43.10.0S  
03.272.43.10.2S  
09.801.06.07.0

### APPLICATION

BPW H-K, SH-SKH,  
ECO PLUS SERIES  
8-9 TONS AXLES

## WHEEL HUB ASSEMBLY



Bare hub dimensions

Ø A	Ø B	Ø C	D	Ø E	Ø F	THREAD (TH)
120.00	150.00	22.00	180.00	380.00	335.00	M136 x 2.5P

MANSONS #	DESCRIPTION	OEM #	TYPE	QTY.	MANSONS #	DESCRIPTION	OEM #	TYPE	QTY.
300.628	IMPULSE WHEEL	03.310.08.51.0	1	1	300.006	THRUST WASHER	03.370.26.24.0, 03.370.26.22.0	8	1
300.020	CIRCLIP	02.5606.60.90	2	1	300.004	WHEEL BEARING	02.640.76.50.0 02.6407.65.00 02.6407.67.00 02.641.02.20.0 02.6410.22.00	9	1
GR314	SEAL	02.566.47.40.0	3	1	LW115	AXLE END LOCK WASHER	03.320.64.01.0	10	1
300.014	WHEEL BEARING	02.640.89.00.0 02.641.02.30.0 02.600.89.00.0 02.640.89.20.0 02.6410.23.00	4	1	300.373	AXLE END NUT	05.266.47.06.0 05.266.47.11.0	11	1
300.012	COVER PLATE	03.010.93.34.0	5	1	300.359	CIRCLIP	02.5606.22.90	12	1
GR315	DUST BOOT	03.120.45.15.0	6	1	300.369	HUB CAP	03.212.25.31.0 03.212.25.33.0	13	1
300.368.1	WHEEL HUB, BARE	01.272.43.19.0 03.272.43.10.0 03.272.43.10.2	7	1					

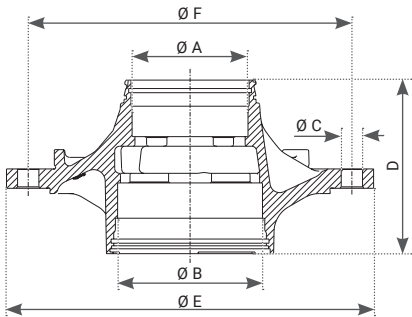
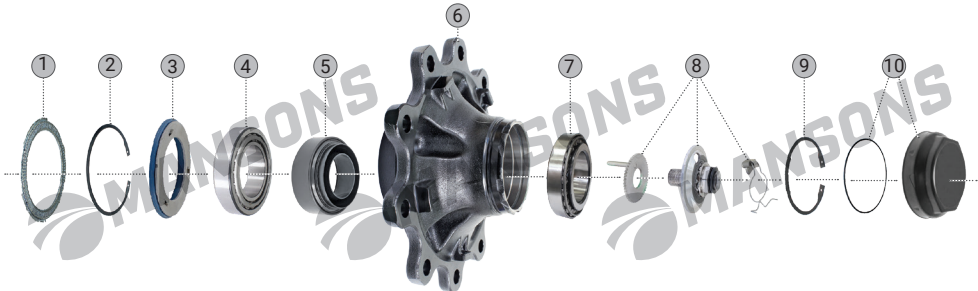


300.682

WHEEL HUB ASSEMBLY

**OEM #**  
09.801.07.35.0

**APPLICATION**  
BPW H-KH, SH-SKH,  
ECO PLUS 2 SERIES  
6.5-9 TONS AXLES



Bare hub dimensions

Ø A	Ø B	Ø C	D	Ø E	Ø F
120.00	150.00	22.00	180.00	380.00	335.00

MANSONS #	DESCRIPTION	OEM #	TYPE	QTY.
300.305	IMPULSE WHEEL	03.310.08.51.0	1	1
300.020	CIRCLIP	02.5606.58.90	2	1
GR314	SEAL	02.566.47.40.0	3	1
300.014	WHEEL BEARING	02.640.89.00.0 02.641.02.30.0 02.600.89.00.0 02.640.89.20.0 02.6410.23.00	4	1
300.425	DUST BOOT	03.120.47.08.0	5	1

MANSONS #	DESCRIPTION	OEM #	TYPE	QTY.
300.682.1	WHEEL HUB, BARE	03.272.43.29.0	6	1
300.004	WHEEL BEARING	02.640.76.50.0 02.6407.65.00 02.6407.67.00 02.641.02.20.0 02.6410.22.00	7	1
300.413	AXLE END NUT	09.001.37.03.0	8	1
300.359	CIRCLIP	02.5606.22.90	9	1
300.196	HUB CAP	05.212.25.78.0	10	1

**300.684**

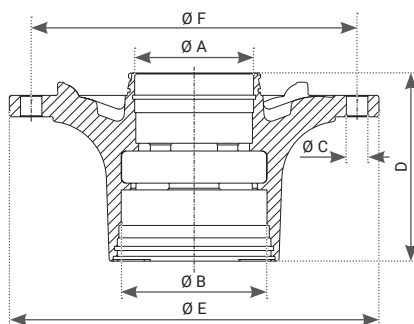
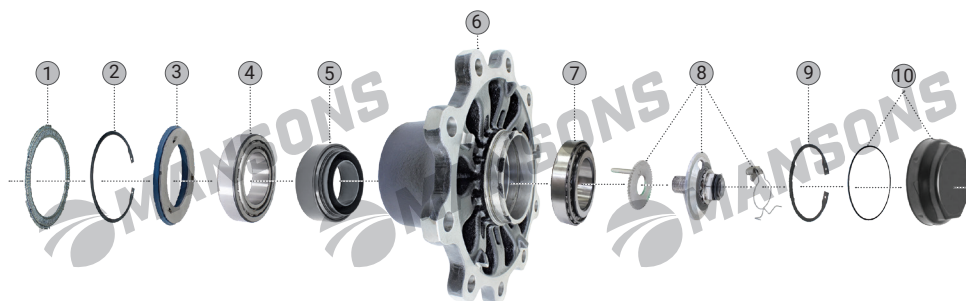
# WHEEL HUB ASSEMBLY

## OEM #

09.801.07.32.0

## APPLICATION

BPW SHB - SKHB  
ECO PLUS 2 SERIES  
8-9 TONS AXLES



Bare hub dimensions

Ø A	Ø B	Ø C	D	Ø E	Ø F
120.00	150.00	22.00	193.50	380.00	335.00

MANSONS #	DESCRIPTION	OEM #	TYPE	QTY.
300.305	IMPULSE WHEEL	03.310.08.51.0	1	1
300.020	CIRCLIP	02.5606.60.90	2	1
GR314	SEAL	02.566.47.40.0	3	1
300.014	WHEEL BEARING	02.640.89.00.0 02.641.02.30.0 02.600.89.00.0 02.640.89.20.0 02.6410.23.00	4	1
300.425	DUST BOOT	03.120.47.08.0	5	1

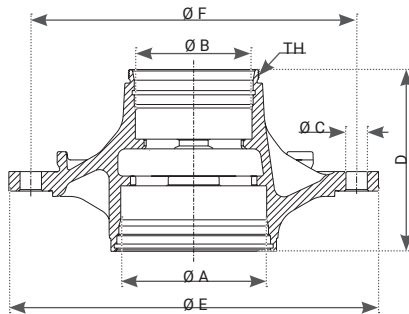
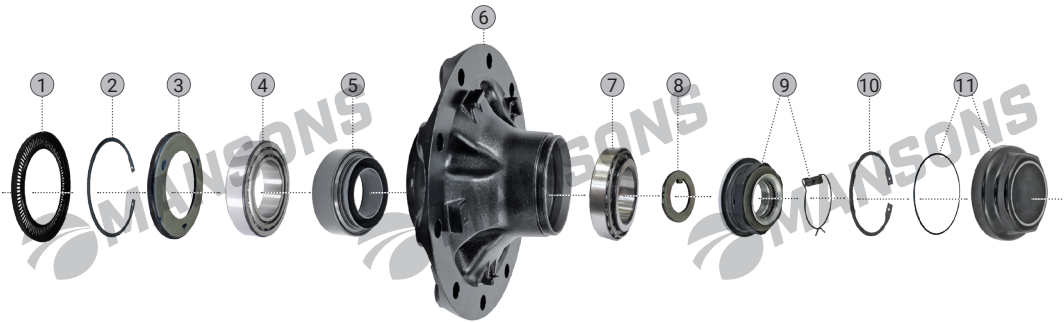
MANSONS #	DESCRIPTION	OEM #	TYPE	QTY.
300.684.1	WHEEL HUB, BARE	03.272.43.28.0	6	1
300.004	WHEEL BEARING	02.640.76.50.0 02.6407.65.00 02.6407.67.00 02.641.02.20.0 02.6410.22.00	7	1
300.413	AXLE END NUT	09.001.37.03.0	8	1
300.359	CIRCLIP	02.5606.22.90	9	1
300.196	HUB CAP	05.212.25.78.0	10	1

300.624

WHEEL HUB ASSEMBLY

**OEM #**  
09.801.08.39.0

**APPLICATION**  
BPW SH - SKH ECO  
PLUS 3 SERIES 6.5 -  
9 TONS AXLES



Bare hub dimensions

Ø A	Ø B	Ø C	D	Ø E	Ø F	THREAD (TH)
150.00	120.00	22.00	187.00	380.00	335.00	M135 x 2P

MANSONS #	DESCRIPTION	OEM #	TYPE	QTY.	MANSONS #	DESCRIPTION	OEM #	TYPE	QTY.
300.627	IMPULSE WHEEL	03.310.08.57.0	1	1	300.004	WHEEL BEARING	02.640.76.50.0 02.6407.65.00 02.6407.67.00 02.641.02.20.0 02.6410.22.00	7	1
300.020	CIRCLIP	02.5606.60.90	2	1	300.631	AXLE END LOCK WASHER	03.320.65.05.0	8	1
300.625	SEAL	02.5664.77.00	3	1	300.373	AXLE END NUT	05.266.47.06.0 05.266.47.11.0	9	1
300.014	WHEEL BEARING	02.640.89.00.0 02.641.02.30.0 02.600.89.00.0 02.640.89.20.0 02.6410.23.00	4	1	300.359	CIRCLIP	02.5606.22.90	10	1
300.425	DUST BOOT	03.120.47.08.0	5	1	300.613	HUB CAP	03.212.25.60.0 03.212.25.90.0 05.212.25.98.0	11	1
300.624.1	WHEEL HUB	03.272.43.42.0	6	1					

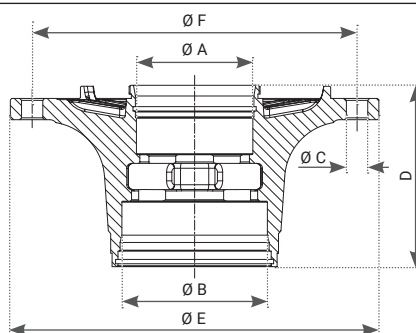
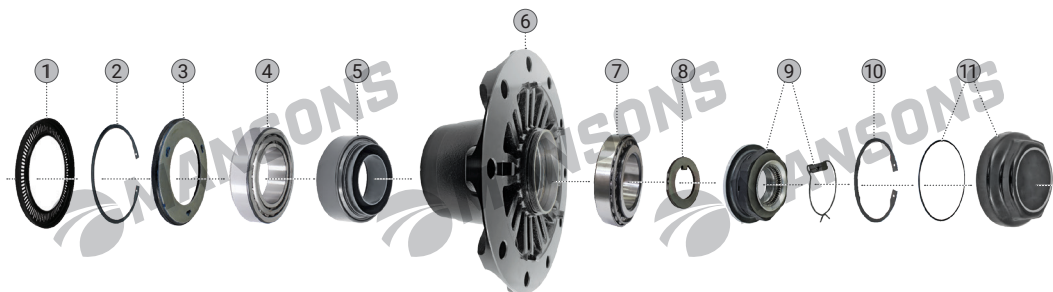


**300.683**

## WHEEL HUB ASSEMBLY

**OEM #**  
09.801.08.36.0

**APPLICATION**  
BPW SHB - SKHB  
ECO PLUS 3 SERIES  
6.5 - 9 TONS AXLES



Bare hub dimensions

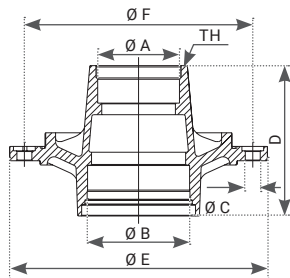
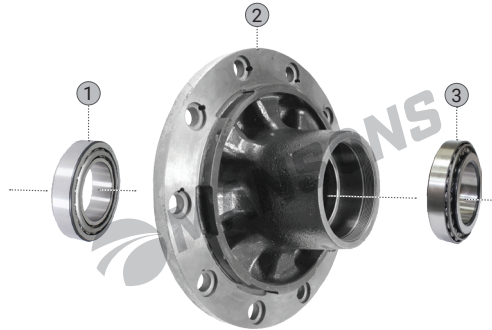
Ø A	Ø B	Ø C	D	Ø E	Ø F	THREAD (TH)
120.00	150.00	22.00	186.00	380.00	335.00	M135 x 2P

MANSONS #	DESCRIPTION	OEM #	TYPE	QTY.	MANSONS #	DESCRIPTION	OEM #	TYPE	QTY.
300.627	IMPULSE WHEEL	03.310.08.57.0	1	1	300.004	WHEEL BEARING	02.640.76.50.0 02.6407.65.00 02.6407.67.00 02.641.02.20.0 02.6410.22.00	7	1
300.020	CIRCLIP	02.5606.60.90	2	1	300.631	AXLE END LOCK WASHER	03.320.65.05.0	8	1
300.625	SEAL	02.5664.77.00	3	1	300.373	AXLE END NUT	05.266.47.06.0 05.266.47.11.0	9	1
300.014	WHEEL BEARING	02.640.89.00.0 02.641.02.30.0 02.600.89.00.0 02.640.89.20.0 02.6410.23.00	4	1	300.359	CIRCLIP	02.5606.22.90	10	1
300.425	DUST BOOT	03.120.47.08.0	5	1	300.613	HUB CAP	03.212.25.60.0 03.212.25.90.0 05.212.25.98.0	11	1
300.683.1	WHEEL HUB, BARE	03.272.43.41.0	6	1					

### 300.370

#### WHEEL HUB ASSEMBLY

**OEM #**  
03.272.48.78.0S  
**APPLICATION**  
BPW HS-HZ, ECO  
SERIES 10-12 TONS  
AXLES



Bare hub dimensions

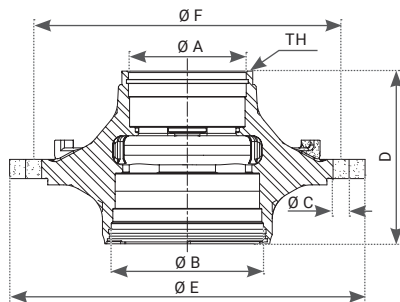
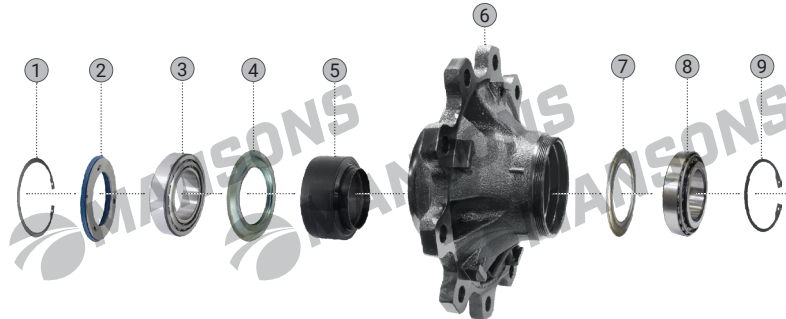
Ø A	Ø B	Ø C	D	Ø E	Ø F	THREAD (TH)
120.00	150.00	22.00	220.00	378.00	335.00	M124 x 2P

MANSONS #	DESCRIPTION	OEM #	TYPE	QTY.
300.004	WHEEL BEARING	03.310.08.57.0	1	1
300.045	WHEEL HUB	03.272.48.78.0	2	1
300.014	WHEEL BEARING	02.5606.60.90	3	1

### 300.623

#### WHEEL HUB ASSEMBLY

**OEM #**  
03.272.43.10.2S1  
03.272.43.10.0S1  
09.801.06.07.0S1  
**APPLICATION**  
BPW H-K, SH-SKH,  
ECO PLUS SERIES  
8-9 TONS AXLES



Bare hub dimensions

Ø A	Ø B	Ø C	D	Ø E	Ø F	THREAD (TH)
120.00	150.00	22.00	180.00	380.00	335.00	M136 x 2.5P

MANSONS #	DESCRIPTION	OEM #	TYPE	QTY.
300.020	CIRCLIP	02.5606.60.90	1	1
GR314	SEAL	02.566.47.40.0	2	1
300.014	WHEEL BEARING	02.640.89.00.0 02.641.02.30.0 02.600.89.00.0 02.640.89.20.0 02.6410.23.00	3	1
300.012	COVER PLATE	03.010.93.34.0	4	1
GR315	DUST BOOT	03.120.45.15.0	5	1

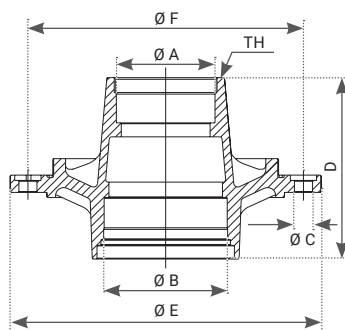
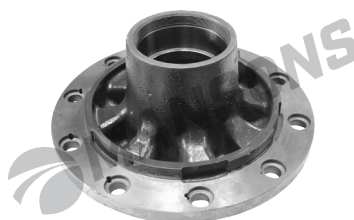
MANSONS #	DESCRIPTION	OEM #	TYPE	QTY.
300.368.1	WHEEL HUB, BARE	01.272.43.19.0 03.272.43.10.2	6	1
300.006	THRUST WASHER	03.370.26.24.0 03.370.26.22.0	7	1
300.004	WHEEL BEARING	02.640.76.50.0 02.6407.65.00 02.6407.67.00 02.641.02.20.0 02.6410.22.00	8	1
300.359	CIRCLIP	02.5606.22.90	9	1

### 300.045

#### WHEEL HUB, BARE

**OEM #**  
03.272.48.78.0

**APPLICATION**  
BPW HS-HZ, ECO  
SERIES 10-12 TONS  
AXLES



Bare hub dimensions

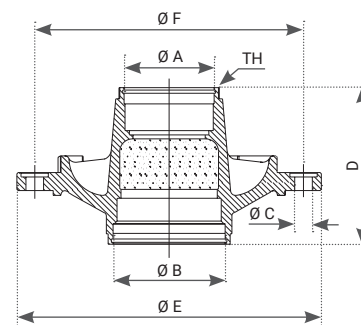
ØA	ØB	ØC	D	ØE	ØF	THREAD (TH)
120.00	150.00	22.00	220.00	378.00	335.00	M124 x 2P

### 300.167

#### WHEEL HUB, BARE

**OEM #**  
03.272.30.81.0  
03.272.30.87.0

**APPLICATION**  
BPW HS-HZ, ECO  
SERIES 8-9 TONS  
AXLES



Bare hub dimensions

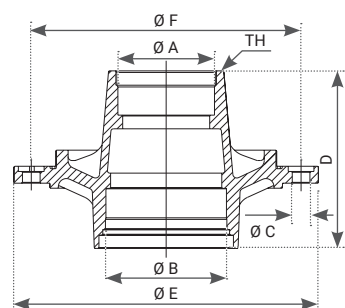
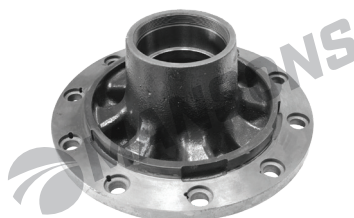
ØA	ØB	ØC	D	ØE	ØF	THREAD (TH)
110.00	130.00	22.00	193.00	380.00	335.00	M125 x 2P

### 300.540

#### WHEEL HUB, BARE

**OEM #**  
03.272.48.40.0  
03.272.48.46.0

**APPLICATION**  
BPW HS-HZ SERIES  
10-12 TONS AXLES



Bare hub dimensions

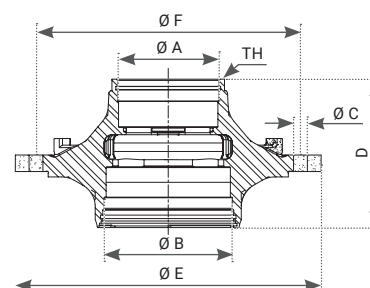
ØA	ØB	ØC	D	ØE	ØF	THREAD (TH)
120.00	150.00	22.00	205.00	380.00	335.00	M125 x 2P

### 300.368.1

#### WHEEL HUB, BARE

**OEM #**  
01.272.43.19.0  
03.272.43.10.0  
03.272.43.10.2

**APPLICATION**  
BPW H-K, SH-SKH,  
ECO PLUS SERIES  
8-9 TONS AXLES



Bare hub dimensions

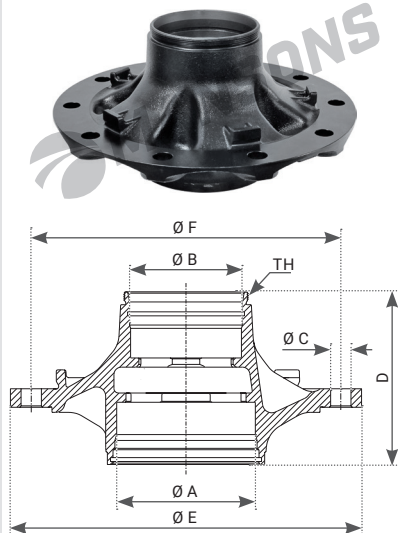
ØA	ØB	ØC	D	ØE	ØF	THREAD (TH)
120.00	150.00	22.00	180.00	380.00	335.00	M136 x 2.5P

### 300.624.1

#### WHEEL HUB, BARE

**OEM #**  
03.272.43.42.0

**APPLICATION**  
BPW SH - SKH ECO  
PLUS 3 SERIES  
6.5-9 TONS AXLES



Bare hub dimensions

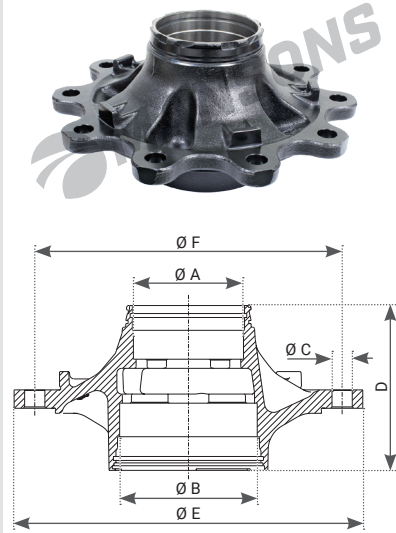
ØA	ØB	ØC	ØD	ØE	ØF	THREAD (TH)
150.00	120.00	22.00	187.00	380.00	335.00	M135 x 2P

### 300.682.1

#### WHEEL HUB, BARE

**OEM #**  
03.272.43.29.0

**APPLICATION**  
BPW H-KH, SH-SKH,  
ECO PLUS 2 SERIES  
6.5-9 TONS AXLES



Bare hub dimensions

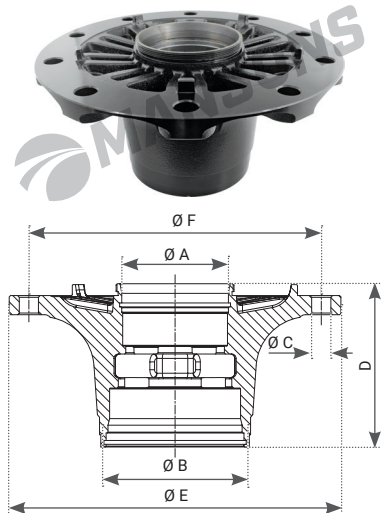
ØA	ØB	ØC	D	ØE	ØF
120.00	150.00	22.00	180.00	380.00	335.00

### 300.683.1

#### WHEEL HUB, BARE

**OEM #**  
03.272.43.41.0

**APPLICATION**  
BPW SHB - SKHB  
ECO PLUS 3 SERIES  
6.5 - 9 TONS AXLES



Bare hub dimensions

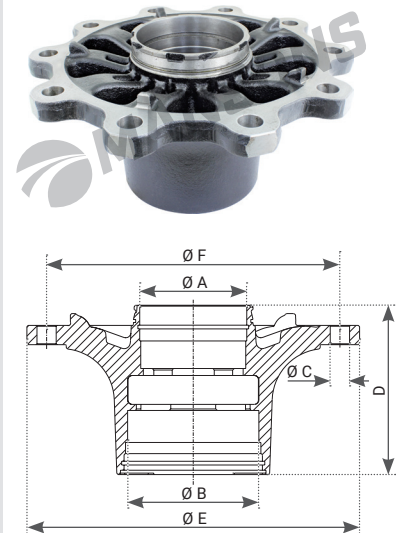
ØA	ØB	ØC	D	ØE	ØF	THREAD (TH)
120.00	150.00	22.00	186.00	380.00	335.00	M135 x 2P

### 300.684.1

#### WHEEL HUB, BARE

**OEM #**  
03.272.43.28.0

**APPLICATION**  
BPW SHB - SKHB  
ECO PLUS 2 SERIES  
8-9 TONS AXLES



Bare hub dimensions

ØA	ØB	ØC	D	ØE	ØF
120.00	150.00	22.00	193.50	380.00	335.00

## 400.130

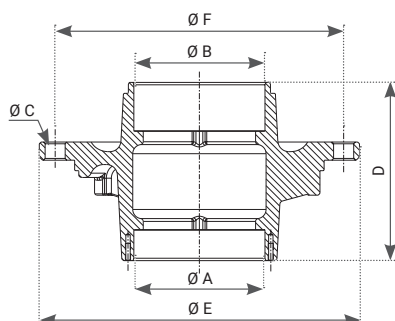
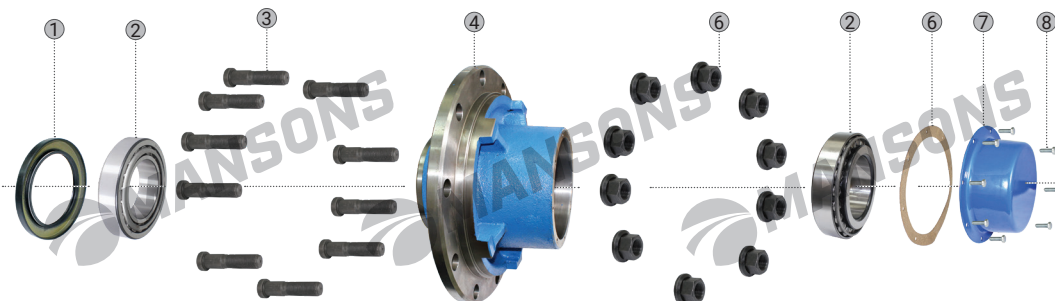
## WHEEL HUB ASSEMBLY

OEM #

AH006001

APPLICATION

FRUEHAUF HENRED  
AXLES



Bare hub dimensions

Ø A	Ø B	Ø C	D	Ø E	Ø F
152.25	152.25	23.20	207.00	372.00	335.00

MANSONS #	DESCRIPTION	OEM #	TYPE	QTY.
GR325	SEAL	--	1	1
300.039	WHEEL BEARING	AJA0813001 HM 518410 HM 518445	2	2
400.118.1	WHEEL BOLT	--	3	10
400.130.1	WHEEL HUB	AH001602	4	1
600.072	WHEEL NUT	--	5	10
400.132	GASKET	--	6	1
400.131	HUB CAP	--	7	1
MFM620C881	HEX BOLT	--	8	8

## 400.130.1

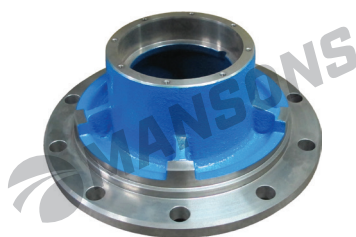
## WHEEL HUB, BARE

OEM #

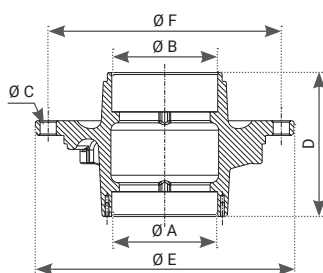
AH001602

APPLICATION

FRUEHAUF HENRED  
AXLES



TAKES BEARING  
HM 518410  
HM 518445



Bare hub dimensions

Ø A	Ø B	Ø C	D	Ø E	Ø F
152.25	152.25	23.20	207.00	372.00	335.00

## 150.017

## WHEEL HUB, BARE

OEM #

448057

A-JB-0038-001

CF1014228

APPLICATION

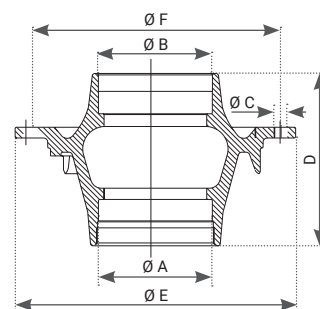
FRUEHAUF PRO-PAR  
PS, PSL SERIES 10  
TO 12 TONS AXLES

CROSS REF#

090.051



TAKES BEARING  
HM 518410  
HM 518445



Bare hub dimensions

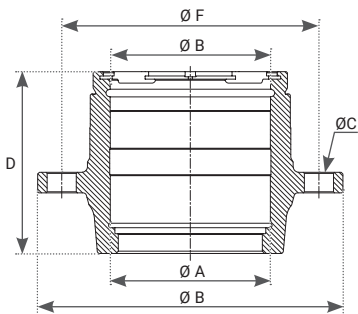
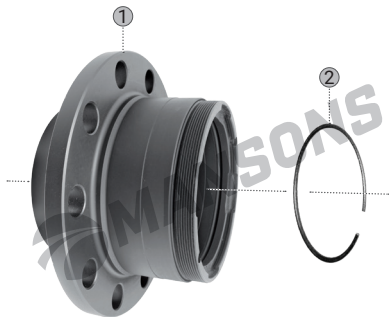
Ø A	Ø B	Ø C	D	Ø E	Ø F	THREAD
152.20	152.20	25.50	230.00	375.00	335.00	6-1/4" x 8 TPI



**870.069**

WHEEL HUB WITH LOCK RING

**OEM #**  
9328152S  
**APPLICATION**  
GIGANT REAR  
GKH1, GKH2 SERIES  
HEAVY DUTY AXLES



Bare hub dimensions

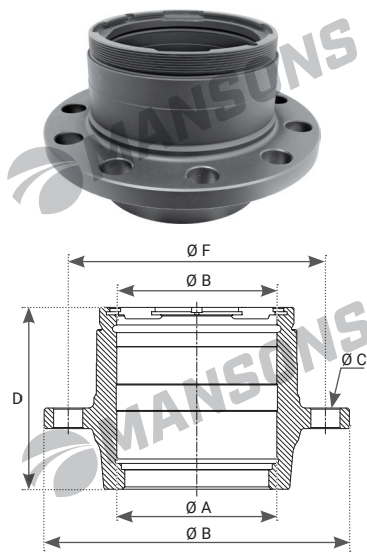
Ø A	Ø B	Ø C	D	Ø E	Ø F
140.00	140.00	25.50	159.00	267.00	225.00

MANSONS #	DESCRIPTION	OEM #	TYPE	QTY.
870.023	WHEEL HUB	9328152	1	1
100.010	LOCK RING	—	2	1

**870.023**

WHEEL HUB, BARE

**OEM #**  
9328152  
**APPLICATION**  
GIGANT REAR  
GKH1, GKH2 SERIES  
HEAVY DUTY AXLES



Bare hub dimensions

Ø A	Ø B	Ø C	D	Ø E	Ø F
140.00	140.00	25.50	159.00	267.00	225.00

## 790.011

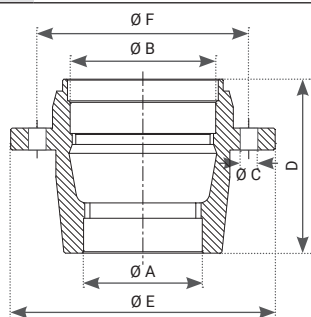
### WHEEL HUB ASSEMBLY

**OEM #**  
14203219

**APPLICATION**  
MERITOR TM  
SERIES AXLES



COMPLETE HUB ASSEMBLY - FULLY GREASED FOR IMMEDIATE INSTALLATION



Bare hub dimensions

Ø A	Ø B	Ø C	D	Ø E	Ø F
4.72" 120.00	5.79" 147.00	0.91" 23.20	6.93" 176.00	10.51" 267.00	8.86" 225.00

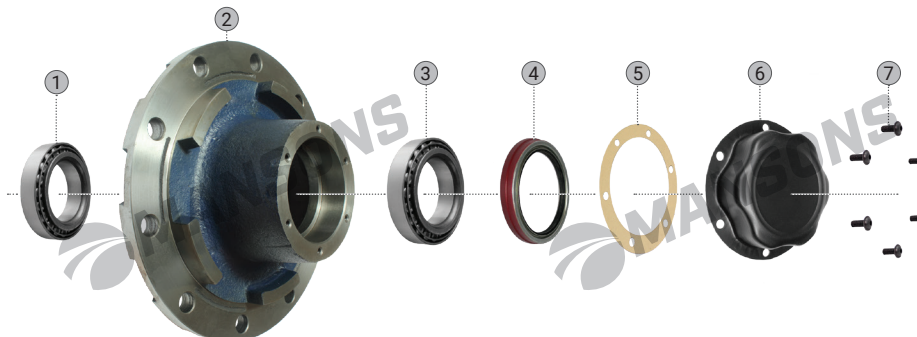
MANSONS #	DESCRIPTION	OEM #	TYPE	QTY.
300.004	WHEEL BEARING	99041045 99041045B	1	1
790.001	WHEEL HUB, BARE	21203219	2	1
300.042	WHEEL BEARING	99041035B 99041035S	3	1
GR100B	SEAL	—	4	1
600.506	GASKET	21211378 2208-X-430	5	1
790.155	HUB CAP	21202627	6	1
780.004	SCREW	21224864	7	6

## 790.007

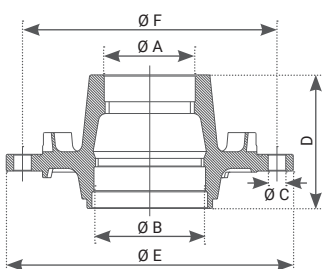
### WHEEL HUB ASSEMBLY

**OEM #**

**APPLICATION**  
MERITOR TM  
SERIES AXLES (ISO  
SPIGOT)



COMPLETE HUB ASSEMBLY - FULLY GREASED FOR IMMEDIATE INSTALLATION



Bare hub dimensions

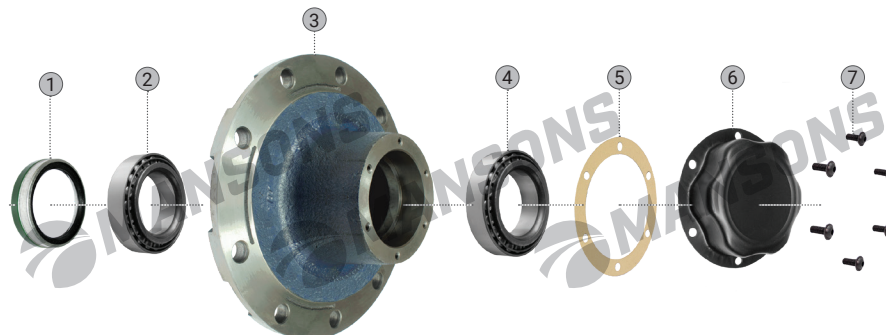
Ø A	Ø B	Ø C	D	Ø E	Ø F	THREAD
4.72" 120.00	5.79" 147.00	0.91" 23.20	6.93" 176.00	14.88" 378.00	13.19" 335.00	—

MANSONS #	DESCRIPTION	OEM #	TYPE	QTY.
300.004	WHEEL BEARING	99041045 99041045B	1	1
790.002	WHEEL HUB, BARE	21204562	2	1
300.042	WHEEL BEARING	99041035B 99041035S	3	1
GR100B	SEAL	—	4	1
600.506	GASKET	21211378 2208-X-430	5	1
790.155	HUB CAP	21202627	6	1
780.004	SCREW	21224864	7	6

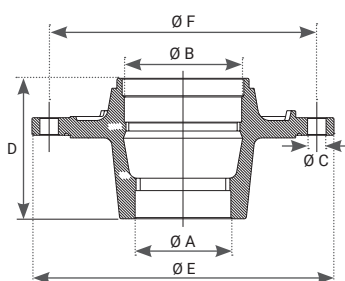
## 790.012

### WHEEL HUB ASSEMBLY

**OEM #**  
14204561  
21204561S  
**APPLICATION**  
MERITOR TM  
SERIES AXLES



COMPLETE HUB ASSEMBLY - FULLY GREASED FOR IMMEDIATE INSTALLATION



Bare hub dimensions

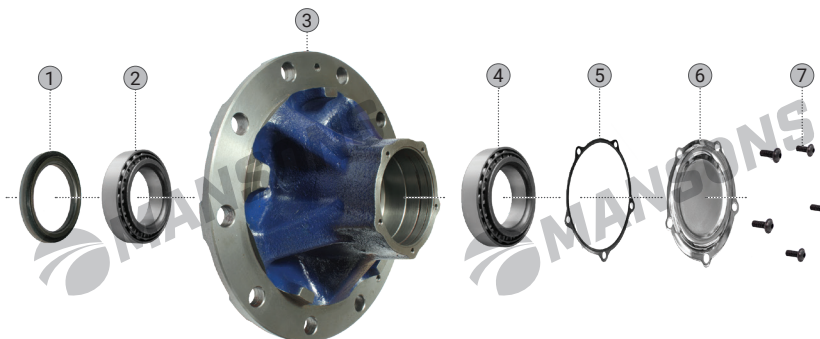
Ø A	Ø B	Ø C	D	Ø E	Ø F
4.72"	5.79"	0.91"	7.28"	14.88"	13.19"
120.00	147.00	23.20	185.00	378.00	335.00

MANSONS #	DESCRIPTION	OEM #	TYPE	QTY.
GR100	SEAL	21200321B	1	1
300.004	WHEEL BEARING	99041045 99041045B	2	1
790.006	WHEEL HUB, BARE	21204562	3	1
300.042	WHEEL BEARING	99041035B 99041035S	4	1
600.506	GASKET	21020062 21211378	5	1
790.155	HUB CAP	21202627	6	1
780.004	SCREW	21224864	7	6

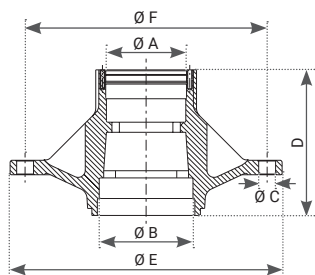
## 790.004

### WHEEL HUB ASSEMBLY

**OEM #**  
14219784  
21219784  
**APPLICATION**  
MERITOR TE9000  
SERIES AXLES



COMPLETE HUB ASSEMBLY - FULLY GREASED FOR IMMEDIATE INSTALLATION



Bare hub dimensions

Ø A	Ø B	Ø C	D	Ø E	Ø F
4.33"	5.12"	0.91"	7.95"	14.80"	13.19"
110.00	130.00	23.20	202.00	376.00	335.00

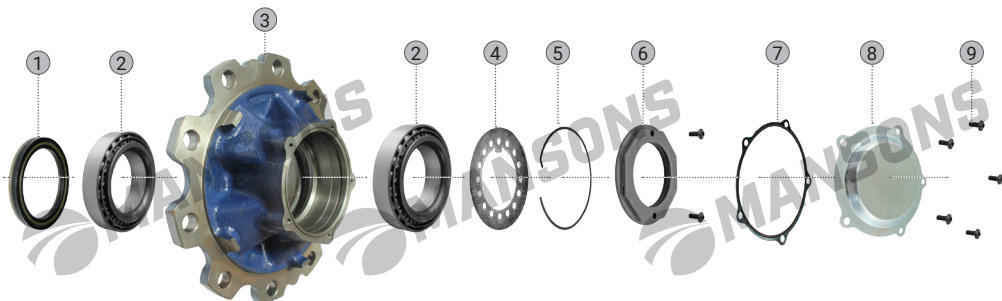
MANSONS #	DESCRIPTION	OEM #	TYPE	QTY.
GR132	SEAL	21220158	1	1
300.003	WHEEL BEARING	99041068	2	1
790.004A	WHEEL HUB, BARE	21219784S	3	1
800.068	WHEEL BEARING	99041067, 99041067P/E	4	1
CSB16	GASKET	21223797	5	1
800.003	HUB CAP	21220727	6	1
780.004	SCREW	21224864	7	5

## 790.000

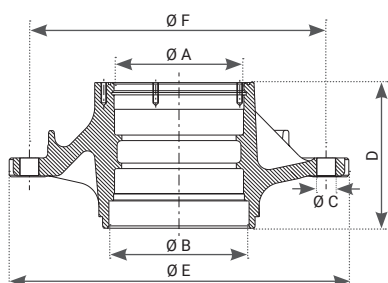
### WHEEL HUB ASSEMBLY

**OEM #**  
14224748

**APPLICATION**  
MERITOR LM & LC  
SERIES AXLES



COMPLETE HUB ASSEMBLY - FULLY GREASED FOR IMMEDIATE INSTALLATION



Bare hub dimensions

Ø A	Ø B	Ø C	D	Ø E	Ø F
5.51"	5.51"	0.90"	6.22"	14.82"	13.19"
140.00	140.00	23.00	158.00	376.50	335.00

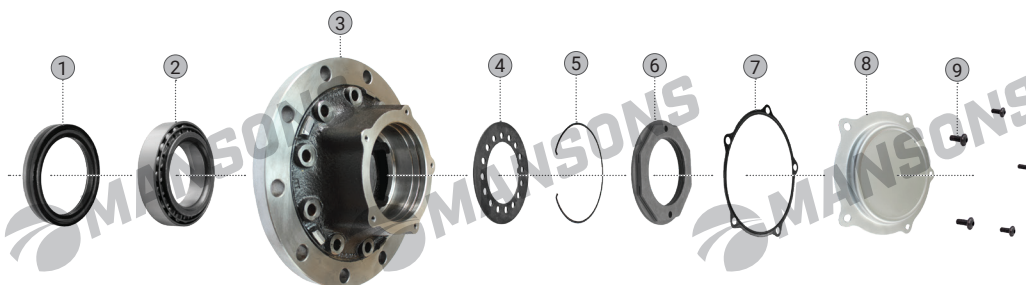
MANSONS #	DESCRIPTION	OEM #	TYPE	QTY.
GR167	SEAL	21200321 21200321A	1	1
920.002	WHEEL BEARING	99041075	2	2
790.000A	WHEEL HUB	14224748	3	1
WA69	AXLE END LOCK WASHER	21224669	4	1
800.004	LOCK RING	21224865 21224865PK5	5	1
780.003	AXLE END NUT	21224762	6	1
GR203	GASKET	21224759	7	1
800.002	HUB CAP	21224673	8	1
780.004	SCREW	21224864	9	7

## 790.157D

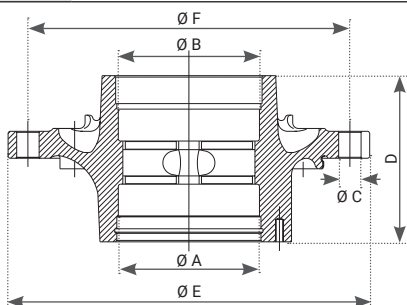
### WHEEL HUB ASSEMBLY

**OEM #**  
14226492

**APPLICATION**  
MERITOR TA & TC  
SERIES AXLES



COMPLETE HUB ASSEMBLY - FULLY GREASED FOR IMMEDIATE INSTALLATION



Bare hub dimensions

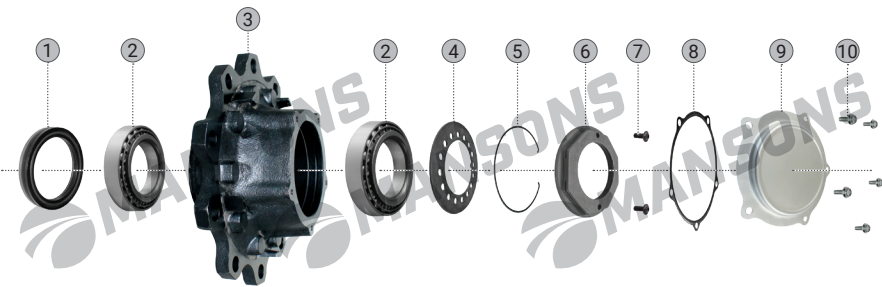
Ø A	Ø B	Ø C	D	Ø E	Ø F
5.78"	5.78"	0.91"	6.81"	14.82"	13.19"
147.00	147.00	23.20	173.00	376.50	335.00

MANSONS #	DESCRIPTION	OEM #	TYPE	QTY.
GR167	SEAL	21200321A	1	1
300.042	WHEEL BEARING	99041035B, 99041035S	2	1
790.157	WHEEL HUB, BARE	14226492	3	1
780.018	AXLE END LOCK WASHER	21226090	4	1
780.017	LOCK RING	21226117	5	1
780.016	AXLE END NUT	21226003	6	1
780.015	GASKET	21226119	7	1
780.014	HUB CAP	21226038	8	1
780.004	SCREW	21224864	9	5

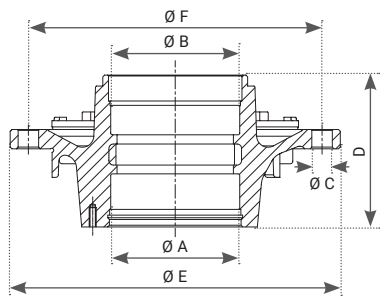
780.217

WHEEL HUB ASSEMBLY

**OEM #**  
14226120  
**APPLICATION**  
MERITOR TA & TC  
SERIES AXLES



COMPLETE HUB ASSEMBLY - FULLY GREASED FOR IMMEDIATE INSTALLATION



Bare hub dimensions

ØA	ØB	ØC	D	ØE	ØF
5.78"	5.78"	0.92"	56.80"	14.82"	13.19"
147.00	147.00	23.50	173.00	376.50	335.00

MANSONS #	DESCRIPTION	OEM #	TYPE	QTY.
GR167	SEAL	21200321 21200321A	1	1
300.042	WHEEL BEARING	99041035B 99041035S	2	2
780.217.1	WHEEL HUB	14226120S	3	1
780.018	AXLE END LOCK WASHER	21226090	4	1
780.017	LOCK RING	21226117 21226117PK5	5	1
780.016	AXLE END NUT	21226003	6	1
780.004	SCREW	21224864	7	2
780.015	GASKET	21226119	8	1
780.014	HUB CAP	21226038	9	1
600.067	BOLT	--	10	5

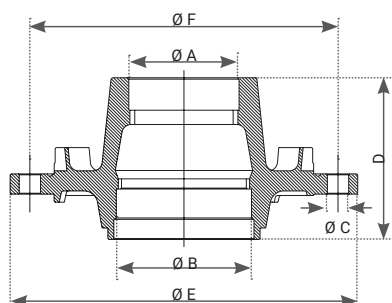


## 760.039

## WHEEL HUB ASSEMBLY

**OEM #**  
301008475S

**APPLICATION**  
RANDON 8090  
SERIES AXLES



Bare hub dimensions

Ø A	Ø B	Ø C	D	Ø E	Ø F
140.00	160.00	22.00	224.50	383.00	335.00

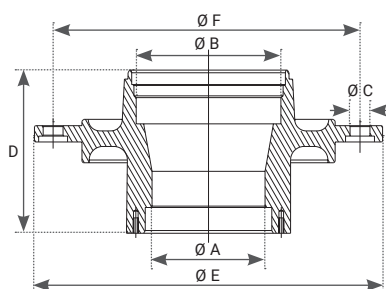
MANSONS #	DESCRIPTION	OEM #	TYPE	QTY.
920.005	WHEEL BEARING	211100024	1	1
760.013	WHEEL HUB, BARE	301008475	2	1
920.000	WHEEL BEARING	211100025	3	1

## 150.031

## WHEEL HUB, BARE

**OEM #**  
150031

**APPLICATION**  
RANDON/  
SUSPENSYS  
TRAILER HUB,  
BRAZIL



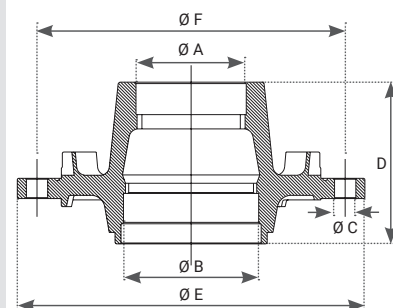
Bare hub dimensions

Ø A	Ø B	Ø C	D	Ø E	Ø F
125.25	160.00	21.80	180.00	385.00	335.00

## 760.013

## WHEEL HUB, BARE

**OEM #**  
301008475  
**APPLICATION**  
RANDON 8090  
SERIES AXLES



Bare hub dimensions

Ø A	Ø B	Ø C	D	Ø E	Ø F
140.00	160.00	22.00	224.50	383.00	335.00

## 600.123

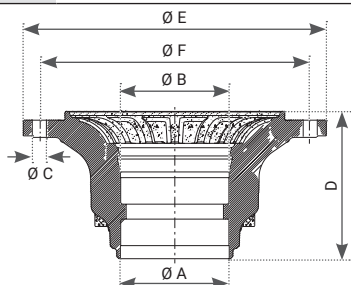
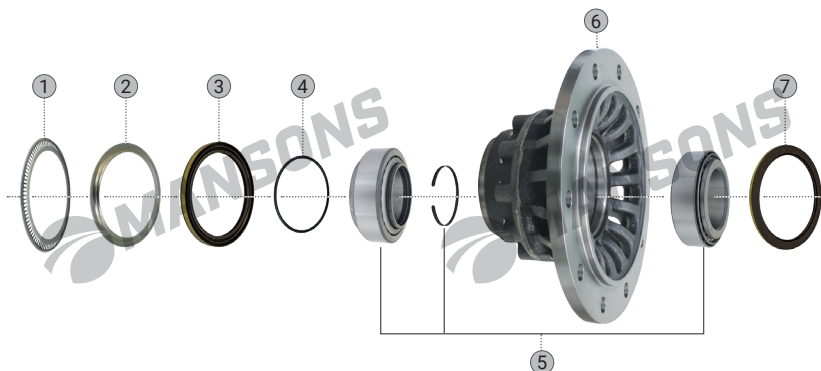
### WHEEL HUB ASSEMBLY

**OEM #**

3307303000  
3307303001  
3307303002  
3307303003

**APPLICATION**

SAF HOLLAND SKRB  
9019/ 9022 SERIES  
AXLES



Bare hub dimensions

Ø A	Ø B	Ø C	D	Ø E	Ø F
5.43"	5.43"	0.87"	7.24"	15.20"	13.19"
138.00	138.00	22.00	184.00	386.00	335.00

MANSONS #	DESCRIPTION	OEM #	TYPE	QTY.
790.005D	IMPULSE WHEEL	4029106300	1	1
790.005E	SEAL RING	--	2	1
790.005BV	SEAL	--	3	1
OR103	O RING	--	4	1
T126	WHEEL BEARING	16100656 4200101500	5	1
600.123.1	WHEEL HUB, BARE	3307303000S 3307303001S 3307303002S 3307303003S	6	1
790.005CV	SEAL	--	7	1
MBL5	GREASE, MOBIL	--	8	1

## 600.124

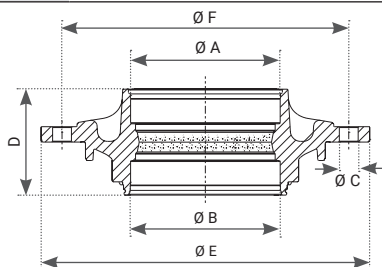
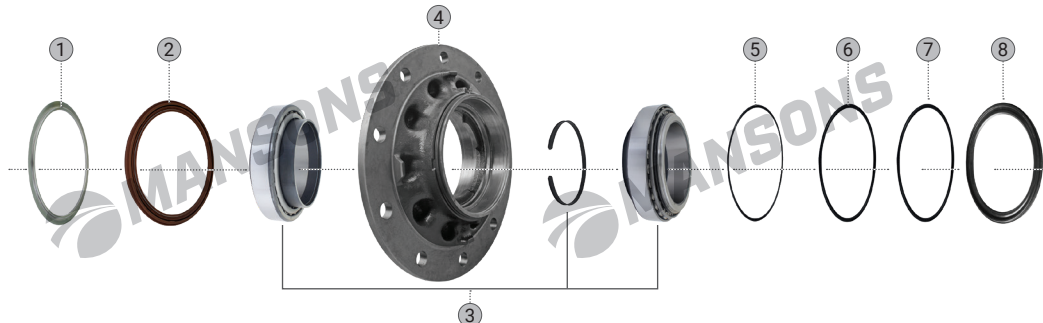
### WHEEL HUB ASSEMBLY

**OEM #**

3307300300  
3307300600  
3307300601

**APPLICATION**

SAF SKRS 9042 /  
11242, SKRZ 9042 /  
11242, SKRLS 9042  
/ 11242 SERIES  
AXLES



Bare hub dimensions

Ø A	Ø B	Ø C	D	Ø E	Ø F
6.88"	6.88"	0.86"	4.88"	15.11"	13.18"
175.00	175.00	22.00	124.00	384.00	335.00

MANSONS #	DESCRIPTION	OEM #	TYPE	QTY.
600.020	SEAL RING	--	1	1
600.104	SEAL	4373004300	2	1
600.103	WHEEL BEARING	4200101602	3	1
600.125	WHEEL HUB, BARE	1307104213 1307300611 1307970822 3307300300 3307300600S 3307300601S	4	1
600.089	O RING	4315005200	5	1
600.090	O RING	4315005600	6	1
600.088	O RING	4315005400	7	1
600.105	SEAL	4373004400 5373004400	8	1

## 600.215

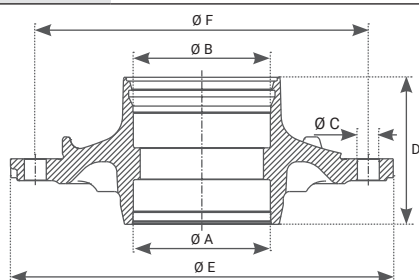
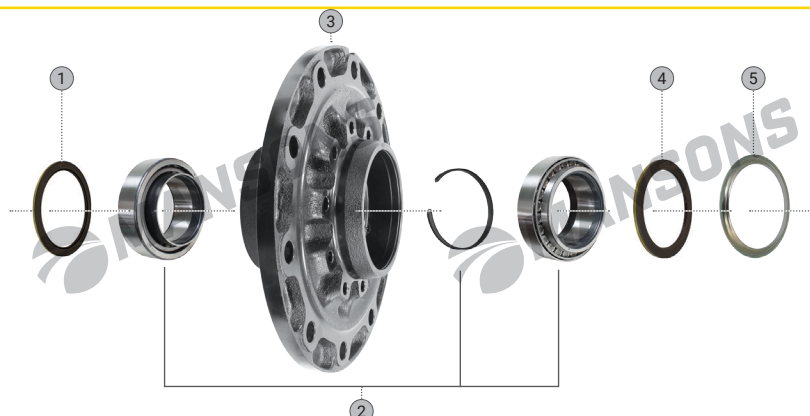
### WHEEL HUB ASSEMBLY

#### OEM #

3307304400  
3307304401

#### APPLICATION

SAF HOLLAND  
SI9-22, SI11-22,  
ZI9-22, ZI11-22, SIL9  
SERIES AXLES



Bare hub dimensions

ØA	ØB	ØC	D	ØE	ØF
5.42"	5.42"	0.86"	5.82"	15.15"	13.10"
137.80	137.80	22.00	148.00	385.00	335.00

MANSONS #	DESCRIPTION	OEM #	TYPE	QTY.
790.005CV	SEAL	--	1	1
600.414	WHEEL BEARING	3200102000	2	1
600.215.1	WHEEL HUB, BARE	3307304400S 3307304401S	3	1
790.005BV	SEAL	--	4	1
790.005E	SEAL RING	--	5	1
MBL5	GREASE, MOBIL	--	6	1

## 600.216

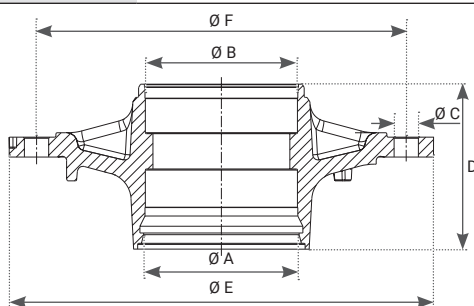
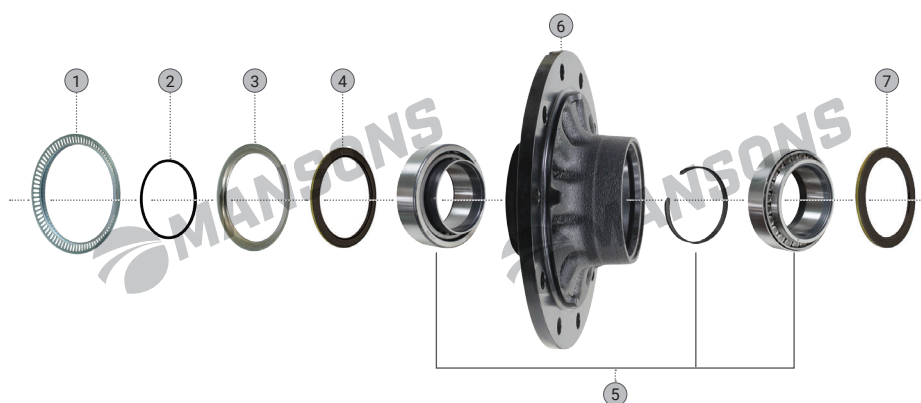
### WHEEL HUB ASSEMBLY

#### OEM #

3307304300  
3307304301  
3307304302  
3307304310

#### APPLICATION

SAF S9-4218 /  
4220, Z9-4218 /  
4220, S11-4218 /  
4220, Z11-4218 /  
4220, SL9-4218,  
SL11-4218 / 4220,  
SZL11-4218 / 4220,  
ZL11-4220 SERIES  
AXLES



Bare hub dimensions

ØA	ØB	ØC	D	ØE	ØF
5.42"	5.42"	0.86"	5.90"	15.15"	13.18"
137.80	137.80	22.00	150.00	385.00	335.00

MANSONS #	DESCRIPTION	OEM #	TYPE	QTY.
600.203	IMPULSE WHEEL	4029107000	1	1
600.512	O RING	4315007500	2	1
790.005E	SEAL RING	--	3	1
790.005BV	SEAL	--	4	1
600.414	WHEEL BEARING	3200102000	5	1
600.216.1	WHEEL HUB, BARE	3307304300S 3307304301S 3307304302S 3307304310S	6	1
790.005CV	SEAL	--	7	1
MBL5	GREASE, MOBIL	--	8	1

## 600.168

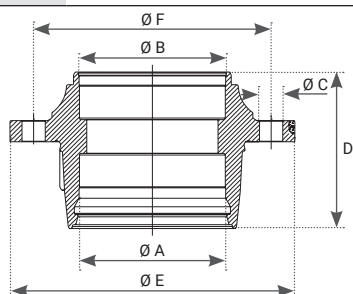
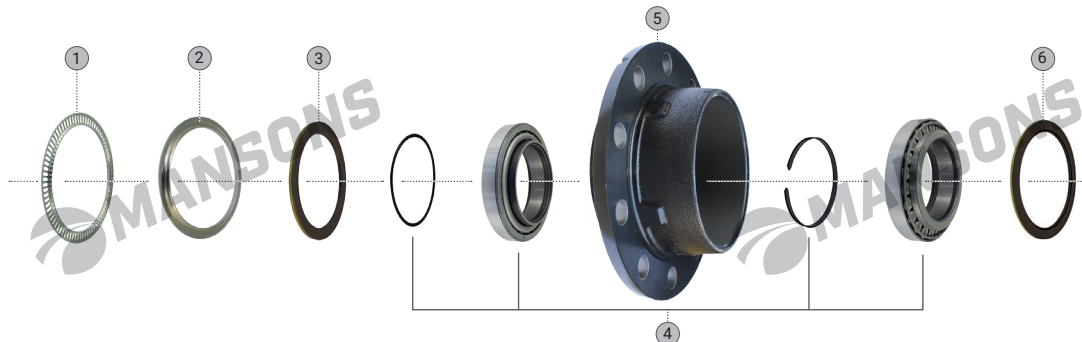
## WHEEL HUB ASSEMBLY

### OEM #

3307304600

### APPLICATION

SAF HOLLAND  
S7-3015, Z7-3015,  
Z9-3020/ 3720,  
Z11-3020/3720,  
ZL9-3020/ 3720,  
ZL11-3020/3720  
SERIES AXLES



Bare hub dimensions

ØA	ØB	ØC	D	ØE	ØF
5.43"	5.43"	0.87"	5.82"	10.63"	8.86"
138.00	138.00	22.00	148.00	270.00	225.00

MANSONS #	DESCRIPTION	OEM #	TYPE	QTY.
600.171	IMPULSE WHEEL	4029106900	1	1
790.005E	SEAL RING	--	2	1
790.005BV	SEAL	--	3	1
600.172	WHEEL BEARING	--	4	1
600.168.1	WHEEL HUB, BARE	3307304600S	5	1
790.005CV	SEAL	--	6	1
MBL5	GREASE, MOBIL	--	7	1

## 600.406

## WHEEL HUB ASSEMBLY

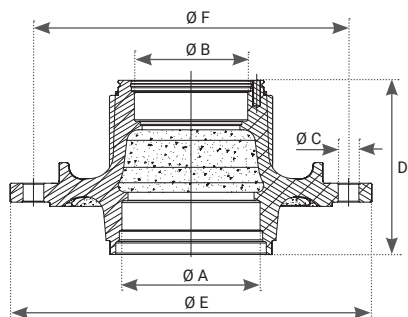
### OEM #

1307115910

3307115900

### APPLICATION

SAF SKRS 9042/  
12242, SKRLS  
9042, SKRZ 12242,  
KRS 12242 SERIES  
AXLES



Bare hub dimensions

ØA	ØB	ØC	D	ØE	ØF
5.79"	4.72"	0.87"	7.28"	15.12"	13.19"
147.00	120.00	22.00	185.00	384.00	335.00

MANSONS #	DESCRIPTION	OEM #	TYPE	QTY.
GR167	SEAL	4373003500 4373003501	1	1
300.042	WHEEL BEARING	4200100600	2	1
600.403	SEAL RING	1092200200	3	1
600.406.1	WHEEL HUB, BARE	1307115910S 3307115900S 3307115901S	4	1
600.404	SEAL	1337004000	5	1
300.004	WHEEL BEARING	4200006000	6	1
600.402	SEAL RING	1092200100	7	1
MBL5	GREASE, MOBIL	--	8	1

## 600.143

### WHEEL HUB

**OEM #**

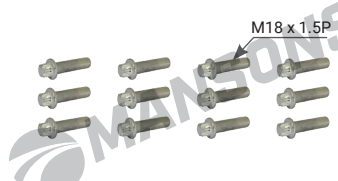
3434365000

**APPLICATION**

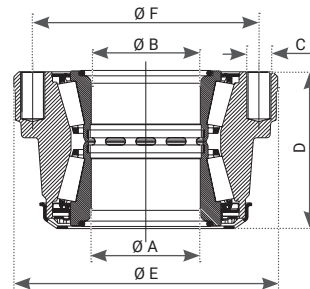
SAF HOLLAND SKRB  
9019/ 9022 SERIES  
AXLES



Complete hub with bearing



M18 x 1.5P



Bare hub dimensions

Ø A	Ø B	Ø C	D	Ø E	Ø F
3.23" 82.00	3.23" 82.00	M18 X 1.5P	4.50" 112.00	7.71" 196.00	6.61" 168.00

MANSONS #	DESCRIPTION	OEM #	TYPE	QTY.
790.005	WHEEL HUB	3434365000S	1	1
600.082	BRAKE DISC BOLT	4343280110	2	12
600.512	O RING	4315007500	2	1

## 790.005

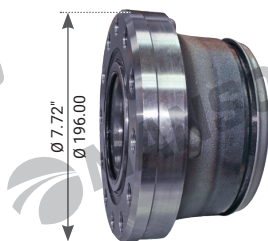
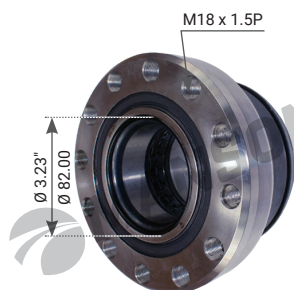
### WHEEL HUB

**OEM #**

3434365000S

**APPLICATION**

SAF SKRB 9019/  
9022 SERIES AXLES



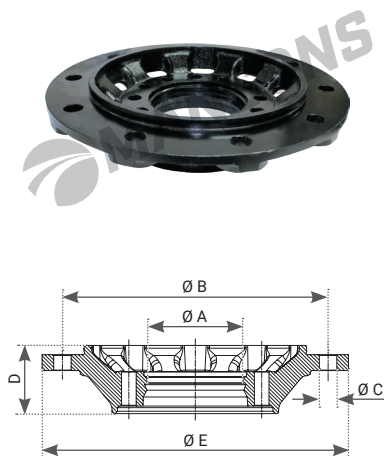


**602.001**

**WHEEL HUB, BARE**

**OEM #**  
1004054

**APPLICATION**  
SCHMITZ  
CARGOBULL  
SCB9010 SERIES  
TRAILER AXLES



Bare hub dimensions

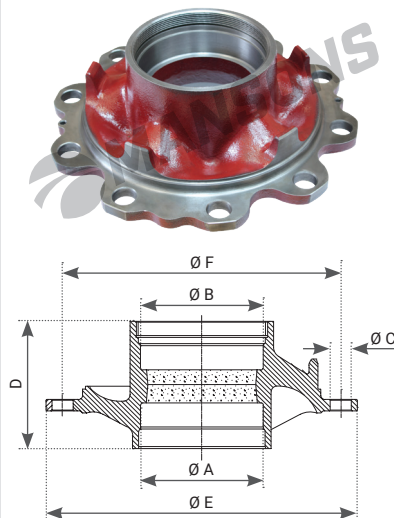
Ø A	Ø B	Ø C	D	Ø E
120.00	335.00	22.00	86.00	386.00

**900.753**

**WHEEL HUB, BARE**

**OEM #**  
M007851

**APPLICATION**  
SMB C1/ C2 AXLES



Bare hub dimensions

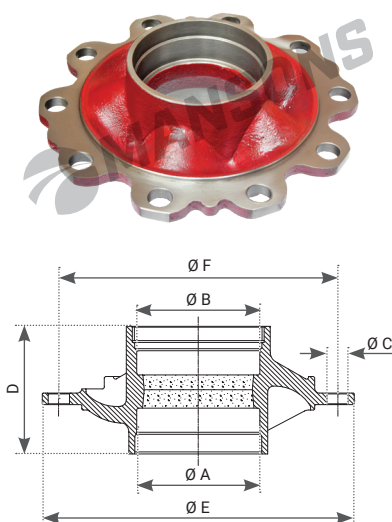
Ø A	Ø B	Ø C	D	Ø E	Ø F
147.00	147.00	25.50	155.00	375.50	335.00

**900.754**

**WHEEL HUB, BARE**

**OEM #**  
M069034

**APPLICATION**  
SMB L1/L2/D1/K1  
AXLES



Bare hub dimensions

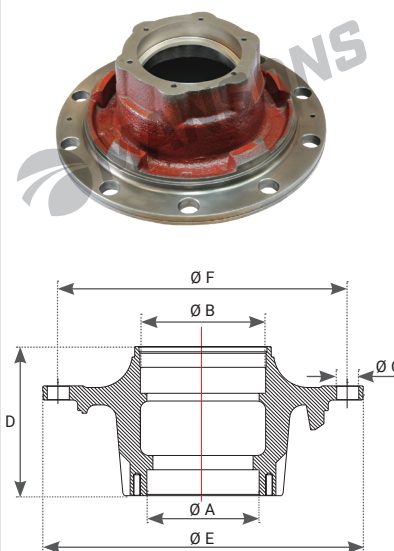
Ø A	Ø B	Ø C	D	Ø E	Ø F
147.00	147.00	25.50	155.00	375.50	335.00

**900.755**

**WHEEL HUB, BARE**

**OEM #**  
6502795D

**APPLICATION**  
TRAILOR L200 TEM/  
LUN & N400 TEM/  
LUN SERIES AXLES



Bare hub dimensions

Ø A	Ø B	Ø C	D	Ø E	Ø F
130.00	145.00	25.50	173.00	371.00	335.00

**FOR TERMS & CONDITIONS PLEASE VISIT OUR WEBSITE**

Reference in this catalogue to OEM / third party names, part numbers / OEM numbers is only for information on OEM / third party parts corresponding to Mansons components & does not imply any connection / affiliations between Mansons & the OEM.



[www.mansons.in](http://www.mansons.in) | [sales@mansons.in](mailto:sales@mansons.in)



NPA 958

# EUROPEAN TRUCK & TRAILER WHEEL HUBS

---