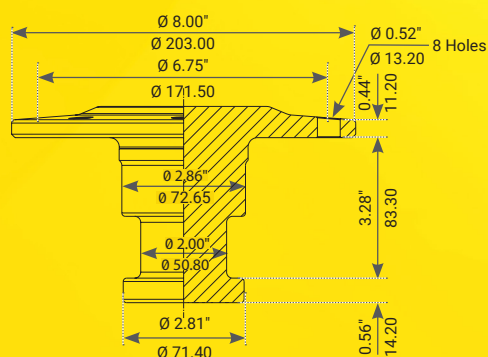
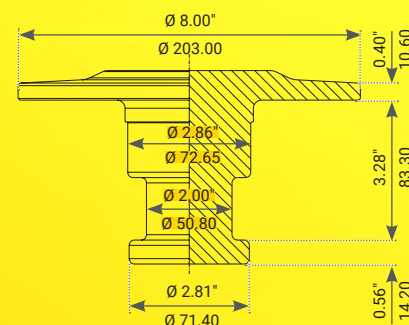


R30700

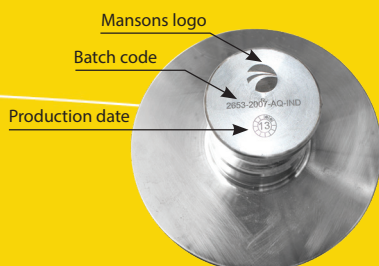
**Application: SUITABLE FOR UP TO 45 TONS**



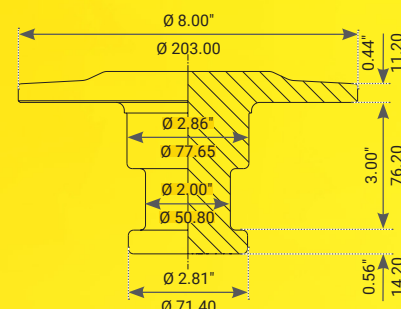
**Application: SAF HOLLAND FIFTHWHEELS**



**Application: SUITABLE FOR UP TO 45 TONS**



- High quality OEM specification steel SAE8630 alloy steel hardened to 302-363 BHN: meets SAEJ848 standards
- Suitable for OEM & aftermarket replacement
- Individual serial & batch code for 100% traceability
- Optimum strength & fatigue resistance



Application: SAF HOLLAND FIFTHWHEELS

