

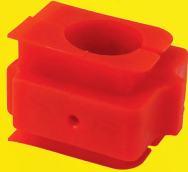
## FREIGHTLINER, INTERNATIONAL NAVISTAR, PETERBILT

### MPU360.296

#### CABIN MOUNT BUSH

OEM#: 18-37924-000

Application: FREIGHTLINER FLD  
SERIES TRUCKS

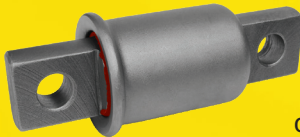


### MPU360.557

#### HOOD BUMPER

OEM#: A17-20868-000,  
A18-59704-000

Application: FREIGHTLINER CASCADIA SERIES  
TRUCKS



### MPU360.000

#### SPRING EYE BUSH

OEM#: 16-16412-000, 16-18035-000

3538115C1

52039, 52296

Application: FREIGHTLINER FAS II  
AIRLINER SERIES TRUCKS

INTERNATIONAL NAVISTAR REAR SINGLE/TANDEM AXLE  
SUSPENSION NEW CORPORATE AIR IROS SERIES TRUCKS  
PETERBILT TRUCKS



### MPU10.055

#### TORQUE ROD BUSH

OEM#: A16119448000

47691-000L

47691-000

Application: FREIGHTLINER FH34-38 4" SPRING, FH36-40 3"  
SPRING, FAS AIRLINER II SERIES TRUCKS, POLYURETHANE

HENDRICKSON REAR HAULMAAX, PRIMAAX, FIREMAAX, HAS  
360/400/402 SERIES SUSPENSIONS

HINO REAR COMFORT AIR SUSPENSIONS, POLYURETHANE



### MPU10.177

#### BEAM END BUSH

OEM#: 29878-001,

29878-001L

Application:

HENDRICKSON AR2 460, RT/RTE 460/480,  
RT2/RTE2 480, RS 450 & 480 SERIES TANDEM  
SUSPENSIONS



### MPU10.060

#### TORQUE ROD BUSH

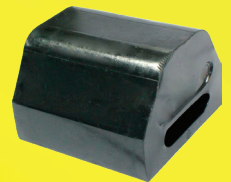
OEM#: 44695-000,

44695-000L

Application:

HENDRICKSON REAR HAS 120/ 150/ 190/  
210/ 230/ 360/ 400/ 402/ 40LH/ 460,  
HA180/ 200/ 230/ 360/ 400/ 460  
SERIES SUSPENSIONS

## HENDRICKSON

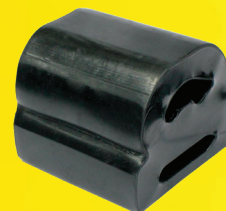


### 10.399

#### SPRING MOUNT

OEM#: 60314-000

Application: HENDRICKSON  
REAR HAULMAAX 400/460  
SERIES SUSPENSIONS



### 10.400

#### SPRING MOUNT

OEM#: 67778-000

Application: HENDRICKSON  
REAR HAULMAAX SERIES  
SUSPENSIONS

### MPU10.035

#### PIVOT BUSH

OEM#: C-3558, S-21824

Application:

HENDRICKSON

INTRAAX AA230/250T, VANTRAAX AAT230/ 250,  
HKA180/ 200/ 250, HK/HS 190/ 230, HT 190/  
230/ 250/ 300, HLM2 SERIES SUSPENSIONS



## MACK | MERITOR



### MPU560.169

#### INSULATOR PAD

OEM#: 10QK365A  
25121508, R307481  
Application: MACK 4"  
SPG. UPPER, SS34/38  
CAMELBACK, ST34  
TAPER LEAF SPRING,  
SW/SWW SERIES  
TRUCKS  
MERITOR SUSPENSIONS



### MPU560.170

#### INSULATOR PAD

OEM#: 10QK36B, 10QK36C  
21036254, R302920  
Application: MACK 4" SPG.  
SS34/38, SWS573, SS44/  
SWS57, SS50, ST34, SW/  
SWW CAMELBACK SERIES  
TRUCKS  
MERITOR SUSPENSIONS



### MPU560.172

#### INSULATOR PAD

OEM#: 25115012, 10QK370  
R302919, R308667  
Application: MACK 4"  
SPRING SS34/38, SWS573,  
S44/SWS57, SS50 CAMEL-  
BACK, SW/SWW WALKING  
BEAM SERIES TRUCKS  
MERITOR SUSPENSIONS



### MPU560.174

#### INSULATOR PAD

OEM#: 10QK372, 10QK389  
R307481  
Application: MACK 5"  
SPRING SS34 / 38, SS58C,  
SWS573, SS65C-W,  
SW-SWW WALKING BEAM  
SERIES TRUCKS  
MERITOR SUSPENSIONS



### MPU560.178

#### INSULATOR PAD

OEM#: 10QK130P1,  
R307441  
Application: MACK REAR  
SUSPENSION SS34-38  
CAMELBACK SERIES  
TRUCKS  
MERITOR SUSPENSIONS

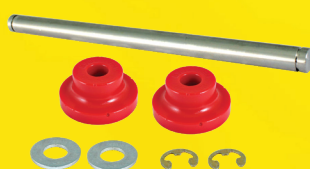
## KENWORTH | PETERBILT



### 540.141

#### MOUNT BUSH

OEM#: M13-6001, EM-7569001  
Application: KENWORTH T600,  
T680, T800, W900 SERIES TRUCKS  
PETERBILT 348, 379, 388, 389  
SERIES TRUCKS



### 540.140

#### EXHAUST MOUNT

OEM#: M13-6001,  
M13-6001S  
EM75-69000  
Application: KENWORTH  
T600, T680, T800, W900  
SERIES TRUCKS  
PETERBILT 348, 379, 388,  
389 SERIES TRUCKS



### 680.136

#### EXHAUST BUSHING KIT

OEM#: M136001S1  
EM75-69000S1  
Application: KENWORTH  
T600, T680, T800, W900  
SERIES TRUCKS  
PETERBILT 348, 379, 388,  
389 SERIES TRUCKS

## EATON FULLER | FREIGHTLINER | INTERNATIONAL NAVISTAR | MACK | PETERBILT | VOLVO

### MPU984.004

#### ISOLATOR BUSH

Application: EATON FULLER,  
FREIGHTLINER, INTERNATIONAL  
NAVISTAR, MACK, PETERBILT, VOLVO



OEM#	APPLICATIONS
21244	EATON FULLER
3088-K399	MACK
FULK3399	INTERNATIONAL NAVISTAR / VOLVO / FREIGHTLINER
K3399	PETERBILT

### 984.003

#### ISOLATOR BUSHING KIT



## FRUEHAUF | MERITOR



**MPU6300**  
TORQUE ROD BUSH

OEM#: U-JA-0033-001,  
UXA000011000  
R307433

Application: FRUEHAUF F, J, NF-2,  
NT-2, NT2W-W TRAILER SUSPENSIONS  
MERITOR SMT SERIES SUSPENSIONS

**422.052**

TORQUE ROD BUSH

Application: FRUEHAUF F, J, NF-2,  
NT-2, NT2W-W TRAILER SUSPENSIONS



**MPU5384**

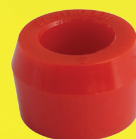
EQUALIZER BUSH

OEM#: U-JA-0030-001, UXA000004000, UXA0004  
R307432

Application: FRUEHAUF T1 SERIES W24T1&2,  
W27T1&2-TRAILER J SERIES SUSPENSIONS  
MERITOR SUSPENSIONS



## TOYOTA



**MPU371.031**  
SHOCK ABSORBER BUSH

OEM#: 90385-19003

Application: TOYOTA LAND CRUISER, LEXUS LX  
SERIES FRONT SUSPENSIONS

**422.061**

EQUALIZER BUSH

OEM#: XE004801

Application: FRUEHAUF HENRED F, FA & F2 SERIES  
SUSPENSIONS, UK & SOUTH AFRICAN SPECS



## DAIHATSU

**710.006**

SHACKLE BUSH

OEM#: 90043-85047-000

Application: DAIHATSU DELTA V24  
FRONT SPRING SUSPENSIONS



**402.012**

SPRING EYE BUSH

OEM#: 9038523037

Application: TOYOTA DYNA 20,  
FEBEST TSB-787 SERIES  
SUSPENSIONS

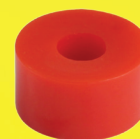


**MPU371.032**

STABILIZER BUSH

OEM#: 90948-T1002

Application: TOYOTA INNOVA, F/L, LEXUS  
SERIES SUSPENSIONS



## NISSAN-UD



**MPU260.024**

SHACKLE BUSH

OEM#: 55046-01G00

Application: NISSAN-UD REAR SUSPENSION  
NP300 PICKUP SERIES TRUCKS

**MPU371.017**

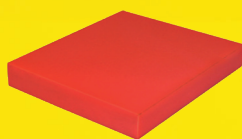
SHACKLE BUSH

OEM#: 90385-18025

Application: TOYOTA LANDCRUISER 40, FJ45,  
FJ55, HJ45, FJ55 SERIES FRONT SUSPENSIONS



## NEWAY | WATSON & CHALIN



**170.009**

SPRING END PAD

OEM#: 91028089, SP-0193

Application: NEWAY T/  
TR8540/8600/8750/8900  
TRI-AXLE, TS/US/USR SINGLE  
POINT TRAILER SUSPENSION

WATSON & CHALIN SP, US,  
SMUS, TSR, TS, SM, SMR,  
PAR SERIES SINGLE POINT  
SUSPENSION



**170.010**

TRUNNION BUSH

OEM#: 91008022, SP-0192

Application: NEWAY  
SB360B/500B/600B/660HDA,  
TS, UR, USR, SERIES TRAILER  
SUSPENSION

WATSON &  
CHALIN SP, PEDESTAL  
MOUNT TRAILER SINGLE  
POINT SERIES SUSPENSIONS